

# Inductive sensor

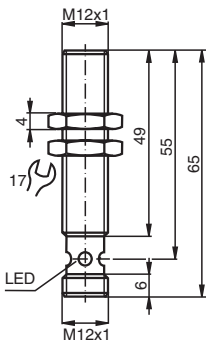
## NBB4-12GM50-EI-V1



- 4 mm flush
- Extended temperature range  
-40 ... +85 °C
- Digital current output



### Dimensions



### Technical Data

General specifications			
Output type			Digital current output
Rated operating distance	$s_n$		4 mm
Installation			flush
Output polarity			DC
Assured operating distance	$s_a$		0 ... 3.24 mm
Actuating element			mild steel, e. g. 1.0037, SR235JR (formerly St37-2) 12 mm x 12 mm x 1 mm
Reduction factor $r_{Al}$			0.4
Reduction factor $r_{Cu}$			0.3
Reduction factor $r_{304}$			0.7
Reduction factor $r_{Brass}$			0.45
Output type			3-wire
Nominal ratings			
Operating voltage	$U_B$		9 ... 30 V DC
Switching frequency	$f$		0 ... 1800 Hz
Hysteresis	$H$		2 ... 15 %

Release date: 2025-03-12 Date of issue: 2025-03-12 Filename: 281560\_eng.pdf

Refer to "General Notes Relating to Pepperl+Fuchs Product Information".

Pepperl+Fuchs Group  
www.pepperl-fuchs.com

USA: +1 330 486 0001  
fa-info@us.pepperl-fuchs.com

Germany: +49 621 776 1111  
fa-info@de.pepperl-fuchs.com

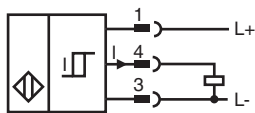
Singapore: +65 6779 9091  
fa-info@sg.pepperl-fuchs.com

**PF** PEPPERL+FUCHS

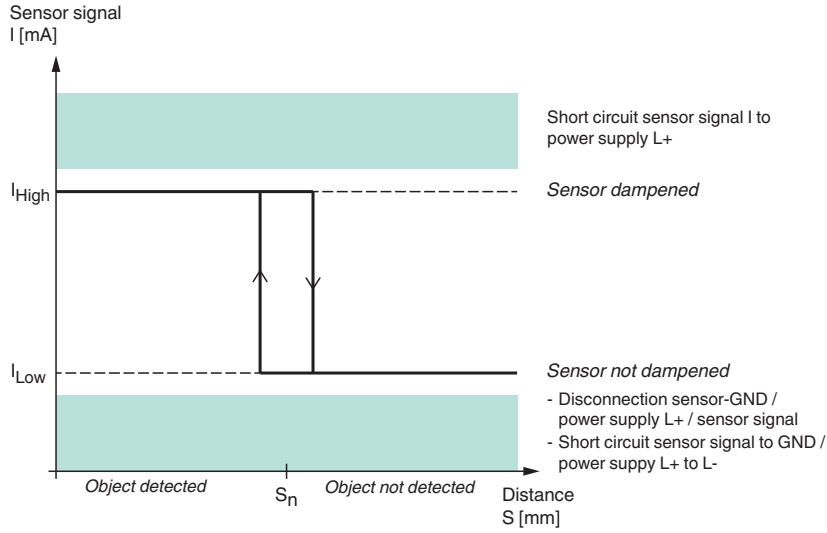
## Technical Data

Reverse polarity protection		reverse polarity protected
Short-circuit protection		yes
Temperature drift		≤ 10 %
Time delay before availability	$t_v$	≤ 5 ms
Load resistor		100 ... 250 Ohm
Switching state indicator		LED, yellow
<b>Functional safety related parameters</b>		
MTTF <sub>d</sub>		1601 a
Mission Time (T <sub>M</sub> )		20 a
Diagnostic Coverage (DC)		0 %
<b>Digital output</b>		
Output value		object detected: 10 mA ± 1 mA object not detected: 5 mA ± 1 mA
<b>Compliance with standards and directives</b>		
Standard conformity		
Standards		EN IEC 60947-5-2
<b>Approvals and certificates</b>		
UL approval		cULus Listed, General Purpose, Class 2 Power Source
<b>Ambient conditions</b>		
Ambient temperature		-40 ... 85 °C (-40 ... 185 °F)
Storage temperature		-40 ... 85 °C (-40 ... 185 °F)
<b>Mechanical specifications</b>		
Connection type		Connector plug
Housing material		brass, nickel-plated
Sensing face		PBT
Degree of protection		IP68 / IP69K
Connector		
Threading		M12 x 1
Number of pins		3
Dimensions		
Length		65 mm
Diameter		12 mm
<b>General information</b>		
Scope of delivery		2 self locking nuts in scope of delivery

## Connection



**Characteristic Curve**



Release date: 2025-03-12 Date of issue: 2025-03-12 Filename: 281560\_eng.pdf

Refer to "General Notes Relating to Pepperl+Fuchs Product Information".

Pepperl+Fuchs Group  
www.pepperl-fuchs.com

USA: +1 330 486 0001  
fa-info@us.pepperl-fuchs.com

Germany: +49 621 776 1111  
fa-info@de.pepperl-fuchs.com

Singapore: +65 6779 9091  
fa-info@sg.pepperl-fuchs.com