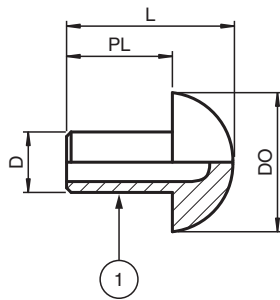


Sealing Plugs for metal Cable Glands BP.NA.M20-M25S.PA.GN.K25

- Sealing element for installation of cable glands in enclosures
- Accessory for CG.NA.* size M20 ... M25S / NPT1/2" ... NPT3/4" cable glands metal
- Accessory for CG.EM.* size M25 / NPT3/4" cable glands metal
- Polyamide
- Ex e and Ex tb certified
- Suitable for operation in Zone 1, Zone 2, Zone 21 and Zone 22
- Packaging unit: 25 pieces, without accessories

Dimensions



Technical Data

Mechanical specifications	
Degree of protection	IP66 / IP68
Material	Polyamide (PA)
Finish	inherent color green
Mass	
Individual component	approx. 1.5 g
Packing unit	approx. 55 g
Dimensions	
Diameter (D)	11.8 mm
Outer diameter (DO)	21.5 mm
Length of pin (PL)	15 mm
Total length (L)	21 mm
Ambient conditions	
Ambient temperature	-60 ... 70 °C (-76 ... 158 °F)
Impact resistance	4 J
Data for application in connection with hazardous areas	
EU-type examination certificate	IMQ 14 ATEX 012X

Release date: 2023-08-09 Date of issue: 2023-08-09 Filename: 309665_eng.pdf

Refer to "General Notes Relating to Pepperl+Fuchs Product Information".

Pepperl+Fuchs Group
www.pepperl-fuchs.com

USA: +1 330 486 0002
pa-info@us.pepperl-fuchs.com

Germany: +49 621 776 2222
pa-info@de.pepperl-fuchs.com








Singapore: +65 6779 9091
pa-info@sg.pepperl-fuchs.com

PF PEPPERL+FUCHS

Technical Data

Marking	Ⓜ II 2 GD Ex e IIC Gb Ex tb IIC Db
International approvals	
IECEx approval	IECEx IMQ 14.0004X
Conformity	
Degree of protection	EN 60529
General information	
Note	For exact reference to types and sizes of cable glands please refer to the specific datasheets
Delivery quantity	25
Scope of delivery	Sealing Plugs for metal Cable Glands Brief instructions (1 copy)
Supplementary information	EC-Type Examination Certificate, Statement of Conformity, Declaration of Conformity, Attestation of Conformity and instructions have to be observed where applicable. For information see www.pepperl-fuchs.com .

Matching System Components

	CG.NA.M25S.SS. S.16.K25	Cable Glands, Metal, for non-armored Cables
	CG.NA.M20.BN.C.16.K50	Cable Glands, Metal, for non-armored Cables
	CG.NA.M20.SS.C.16.K50	Cable Glands, Metal, for non-armored Cables
	CG.EM.M20.SS.C.18.K50	Cable Glands, Metal, for shielded EMC Cables
	CG.EM.M20.BN.C.18.K50	Cable Glands, Metal, for shielded EMC Cables
	CG.NA.M25S.BN. C.16.K25	Cable Glands, Metal, for non-armored Cables
	CG.NA.M25S.SS. C.16.K25	Cable Glands, Metal, for non-armored Cables