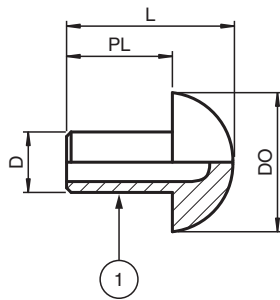


Sealing Plugs for metal Cable Glands BP.NA.M40-M50S.PA.GN.K05

- Sealing element for installation of cable glands in enclosures
- Accessory for CG.NA.* size M40 ... M50S / NPT1-1/4" ... NPT1-1/2S" cable glands metal
- Accessory for CG.EM.* size M50 / NPT1-1/2" cable glands metal
- Polyamide
- Ex e and Ex tb certified
- Suitable for operation in Zone 1, Zone 2, Zone 21 and Zone 22
- Packaging unit: 5 pieces, without accessories

Dimensions



Technical Data

| Mechanical specifications | |
|---|--------------------------------|
| Degree of protection | IP66 / IP68 |
| Material | Polyamide (PA) |
| Finish | inherent color green |
| Mass | |
| Individual component | approx. 9 g |
| Packing unit | approx. 55 g |
| Dimensions | |
| Diameter (D) | 27.8 mm |
| Outer diameter (DO) | 40 mm |
| Length of pin (PL) | 24 mm |
| Total length (L) | 34 mm |
| Ambient conditions | |
| Ambient temperature | -60 ... 70 °C (-76 ... 158 °F) |
| Impact resistance | 4 J |
| Data for application in connection with hazardous areas | |
| EU-type examination certificate | IMQ 14 ATEX 012X |

Release date: 2023-08-09 Date of issue: 2023-08-09 Filename: 309668_eng.pdf

Refer to "General Notes Relating to Pepperl+Fuchs Product Information".

Pepperl+Fuchs Group
www.pepperl-fuchs.com

USA: +1 330 486 0002
pa-info@us.pepperl-fuchs.com

Germany: +49 621 776 2222
pa-info@de.pepperl-fuchs.com





Singapore: +65 6779 9091
pa-info@sg.pepperl-fuchs.com

PF PEPPERL+FUCHS

Technical Data

| | |
|--------------------------------|--|
| Marking | Ⓜ II 2 GD Ex e IIC Gb Ex tb IIC Db |
| International approvals | |
| IECEX approval | IECEX IMQ 14.0004X |
| Conformity | |
| Degree of protection | EN 60529 |
| General information | |
| Note | For exact reference to types and sizes of cable glands please refer to the specific datasheets |
| Delivery quantity | 5 |
| Scope of delivery | Sealing Plugs for metal Cable Glands Brief instructions (1 copy) |
| Supplementary information | EC-Type Examination Certificate, Statement of Conformity, Declaration of Conformity, Attestation of Conformity and instructions have to be observed where applicable. For information see www.pepperl-fuchs.com . |

Matching System Components

| | | |
|---|-------------------------------|--|
|  | CG.EM.M40.BN.C.20.K05 | Cable Glands, Metal, for shielded EMC Cables |
|  | CG.EM.M40.SS.C.20.K05 | Cable Glands, Metal, for shielded EMC Cables |
|  | CG.NA.M50S.BN.C.18.K05 | Cable Glands, Metal, for non-armored Cables |
|  | CG.NA.M50S.SS.C.18.K05 | Cable Glands, Metal, for non-armored Cables |