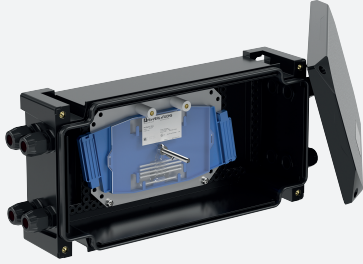


# FO Splice Boxes in Glass-Fiber Reinforced Polyester

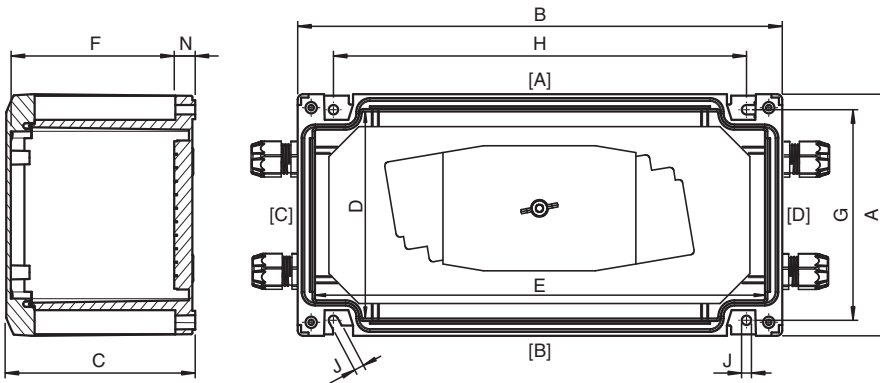
## GR.TFO.18.36.10.B-S0002



- Safe protection of fiber optic cable splices in hazardous areas
- Installation in Zone 1, Zone 2, Zone 21 and Zone 22
- Ex op pr and Ex tb certified
- Carbon loaded, antistatic glass-fiber reinforced polyester
- 179 mm x 359 mm x 104 mm
- Modern design with high impact resistance
- Easy installation due to easily accessible mounting points
- Easy cover opening without damage due to multiple pry points
- Left side cable gland polyamide, 2x M20; right side cable gland polyamide, 2x M20



### Dimensions



Dimension values see data table.

Image and drawing are generic for this device type and may deviate from the specific variant.

### Technical Data

#### Mechanical specifications

Enclosure cover	fully detachable
Cover fixing	
Screws	M6 stainless steel combination Phillips and slotted screw
Number	4
Tightening torque	3.5 Nm
Cover seal	foamed silicone
Degree of protection	IP66
Cable entry	thru-holes
Cable entry face C	
M20 quantity	2
M20 series	Cable Glands, Plastic
M20 type	CG.PEDS1.M20.*
M20 clamping range	6 ... 12 mm

Release date: 2023-05-24 Date of issue: 2023-05-24 Filename: 320197\_eng.pdf

Refer to "General Notes Relating to Pepperl+Fuchs Product Information".

Pepperl+Fuchs Group  
www.pepperl-fuchs.com

USA: +1 330 486 0002  
pa-info@us.pepperl-fuchs.com

Germany: +49 621 776 2222  
pa-info@de.pepperl-fuchs.com

Singapore: +65 6779 9091  
pa-info@sg.pepperl-fuchs.com

**PEPPERL+FUCHS**

## Technical Data

<b>Cable entry face D</b>		
M20 quantity		2
M20 series		Cable Glands, Plastic
M20 type		CG.PEDS1.M20.*
M20 clamping range		6 ... 12 mm
<b>Material</b>		
Enclosure		carbon loaded, antistatic glass-fiber reinforced polyester (GRP)
Finish		inherent color black
Grounding plate		2 mm brass optional
Mass		approx. 2.6 kg
<b>Dimensions</b>		
External dimension (A)		179 mm
External dimension (B)		359 mm
External dimension (C)		104 mm
Internal dimension (D)		156 mm
Internal dimension (E)		336 mm
Internal dimension (F)		81.5 mm
Mounting holes distance (G)		156 mm
Mounting holes distance (H)		306 mm
Mounting holes diameter (J)		7 mm
Thickness of mounting brackets (N)		18 mm
Mounting		4 screws
Grounding		none as standard optional M6 or M8 internal/external brass nickel-plated grounding bolt optional M6 or M8 internal/external stainless steel grounding bolt
<b>Fiber optic splice tray</b>		
Number		2
Dimensions		142 mm x 92 mm x 8 mm
Quantity of splice connections per tray		12
Type of splices		fusion with 60 mm heatshrink protectors
Fiber optic splicing protection holders per tray		2 for heatshrink splice protectors 60 mm, 6 splices each
Fiber optic strain relief per tray		2 each for 12 fibers with 0.9 mm or 1.1 mm insulation, removeable
Fiber optic cables min. bending radius		35 mm
Fiber optic cables frequency range		10 ... 10000 MHz
Standards		DIN 47662 and Telecom standards
<b>Ambient conditions</b>		
Ambient temperature		-40 ... 55 °C (-40 ... 131 °F)
<b>Data for application in connection with hazardous areas</b>		
EU-type examination certificate		CML 17 ATEX 3255X BASEEFA 14 ATEX 0368U
Marking		Ⓔ II 2 GD Ex op pr IIC T* Gb Ex tb IIIC T** °C Db T6/T80 °C @ Ta +40 °C T5/T95 °C @ Ta +55 °C
<b>International approvals</b>		
IECEX approval		IECEX CML 17.0144X IECEX BAS 14.0169U
UKCA approval		CML 21 UKEX 3896X
Further approvals		further on request
<b>Conformity</b>		
Degree of protection		EN 60529
CE marking		0102
<b>General information</b>		

Release date: 2023-05-24 Date of issue: 2023-05-24 Filename: 320197\_eng.pdf

Refer to "General Notes Relating to Pepperl+Fuchs Product Information".

Pepperl+Fuchs Group  
www.pepperl-fuchs.comUSA: +1 330 486 0002  
pa-info@us.pepperl-fuchs.comGermany: +49 621 776 2222  
pa-info@de.pepperl-fuchs.comSingapore: +65 6779 9091  
pa-info@sg.pepperl-fuchs.com

**PEPPERL+FUCHS**

## Technical Data

Supplementary information	EC-Type Examination Certificate, Statement of Conformity, Declaration of Conformity, Attestation of Conformity and instructions have to be observed where applicable. For information see <a href="http://www.pepperl-fuchs.com">www.pepperl-fuchs.com</a> .
<b>Accessories</b>	
Optional accessories	M6 or M8 internal/external brass nickel-plated grounding bolts M6 or M8 internal/external stainless steel grounding bolts