



### Model Number

**V15L-M16-500**

Receptacles, M12/M16, 5-pin

### Features

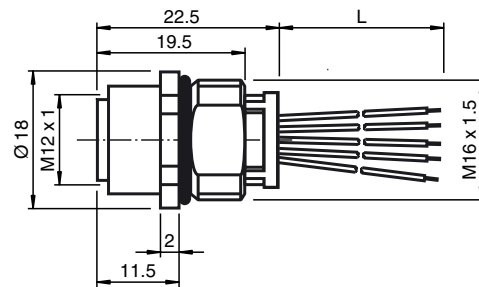
- Front/screw mounting

### Accessories

**LOCKNUT M16 NICKEL BRASS**

Nut, nickel-plated brass

## Dimensions



## Technical data

### General specifications

Number of pins	5
Connection 1	socket
Construction type 1	straight
Threading 1	M12
Connection 2	cable end
UL File Number	E191152

### Electrical specifications

Rated voltage	$U_r$	63 V
Rated current	$I_r$	12 A at 40 °C

Volume resistance	$\leq 5 \text{ m}\Omega$
Surge protection	Category III

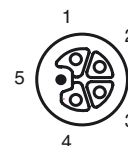
### Ambient conditions

Ambient temperature	-40 ... 85 °C (-40 ... 185 °F)
Pollution degree	3

### Mechanical specifications

Degree of protection	IP68		
Connection	flexible leads (16 AWG)		
Material			
Contacts	CuZn		
Contact surface	Au		
Threaded bushings	Zinc die-casting, nickel-plated		
Cable			
Length	L	500 mm	
Mating cycles	≥ 100		

## Electrical connection

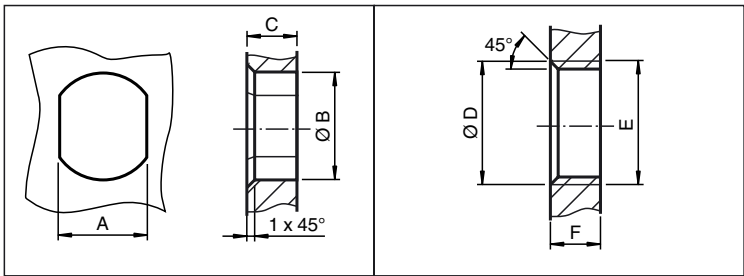


## Electrical connection

1	_____	BN
2	_____	WH
3	_____	BU
4	_____	BK
5	_____	GY



Installation Note



	A	B	C	D	E	F
M8	7.1 <sup>+0.1</sup>	Ø 8.2 <sup>+0.1</sup>	2 - 4 mm	-	M8x0.5	2 - 4 mm
M12	11 <sup>+0.1</sup>	Ø 12.2 <sup>+0.1</sup>	< 4 mm	-	M12x1	< 4.5 mm
M16	13.5 <sup>+0.1</sup>	Ø 16.1	< 4.5 mm	Ø 17 <sup>+0.2</sup>	M16x1.5	> 2.5 mm
M20	13.5 <sup>+0.1</sup>	Ø 20.1	-	Ø 20 <sup>+0.2</sup>	M20x1.5	< 6 mm
PG9	13.5 <sup>+0.1</sup>	Ø 15.3 <sup>+0.1</sup>	< 4.5 mm	Ø 16	PG9	> 2.5 mm
PG13.5	18.8 <sup>+0.1</sup>	Ø 20.5 <sup>+0.1</sup>	-	Ø 22 <sup>±0.1</sup>	PG13.5	-