



Model Number

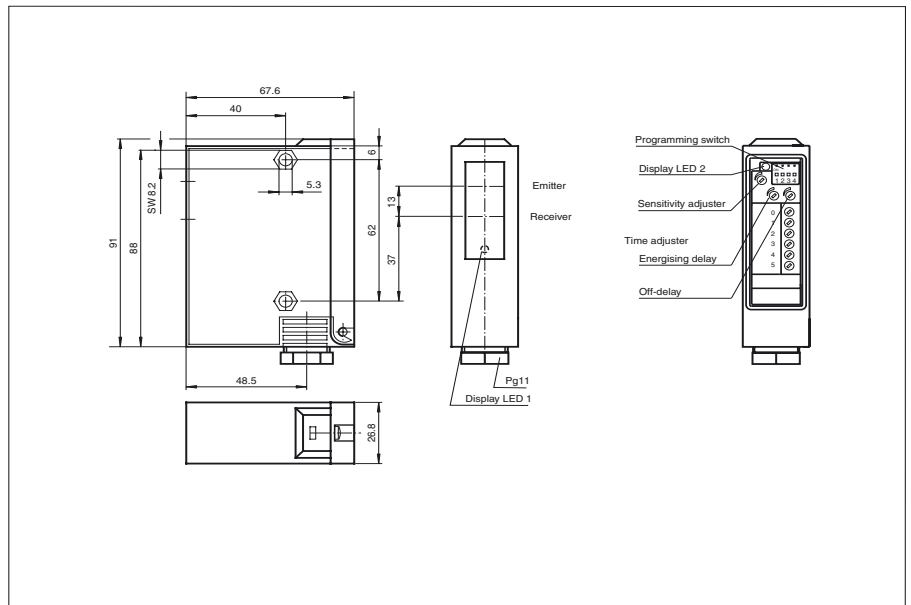
RL24-8-2000/47/76b/116

Diffuse mode sensor
with terminal compartment

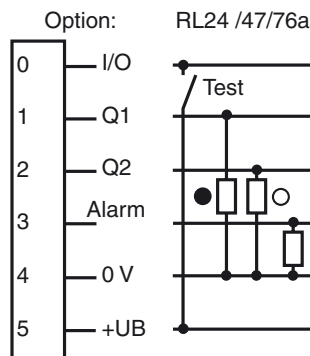
Features

- Detection range 10 mm ... 2000 mm, adjustable
- Sturdy plastic housing
- Sensitivity adjuster and light-/dark switch
- Pre-fault indication and output
- 4 programmable time functions
- Operating voltage 10;V ...;30;V;DC or 12;V ...;240;V;AC/DC

Dimensions



Electrical connection



- = Light on
- = Dark on

Release date: 2009-08-18 16:18 Date of issue: 2009-08-18 419236_ENG.xml

Technical data

General specifications

| | |
|----------------------------|--|
| Detection range | 10 ... 2000 mm |
| Light source | LED |
| Approvals | CE |
| USA | UL |
| Kanada | CSA |
| Adjustment range | 600 ... 2000 mm |
| Light type | red, modulated light |
| Diameter of the light spot | approx. 40 mm at 2000 mm detection range |
| Angle of divergence | approx. 1.4 ° |
| Ambient light limit | 35000 Lux |

Indicators/operating means

| | |
|--------------------|---|
| Function display | LED yellow, frontal and in the terminal compartment, lit up when light beam is free, flashing when falling short of the stability control |
| Operating elements | Programming switch for light/dark ON, timer functions |
| Operating elements | 2 potentiometers for timer functions |
| Operating elements | 1 Potentiometer as sensitivity adjuster |

Electrical specifications

| | | |
|------------------------|-------|----------------|
| Operating voltage | U_B | 10 ... 30 V DC |
| Ripple | | 10 % |
| No-load supply current | I_0 | 55 mA |

Input

| | |
|------------|----------------------|
| Test input | Emitter deactivation |
|------------|----------------------|

Output

| | | |
|------------------------------------|--|---|
| Output of the pre-fault indication | 1 pnp | |
| Switching type | light/dark switching | |
| Signal output | 2 pnp, antivalent, short-circuit proof, protected against reverse polarity | |
| Switching voltage | 30 V DC | |
| Switching current | max. 200 mA | |
| Switching frequency | f | 250 Hz |
| Response time | | 2 ms |
| Timer function | | GAN, GAB, IAB, GAN-GAB, programmable adjustment range 0.1 ...10 s |

Standard conformity

| | |
|-----------|--------------|
| Standards | EN 60947-5-2 |
|-----------|--------------|

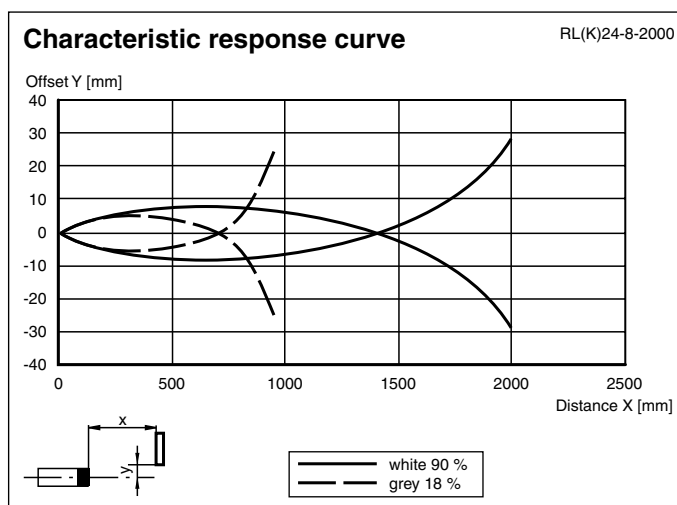
Ambient conditions

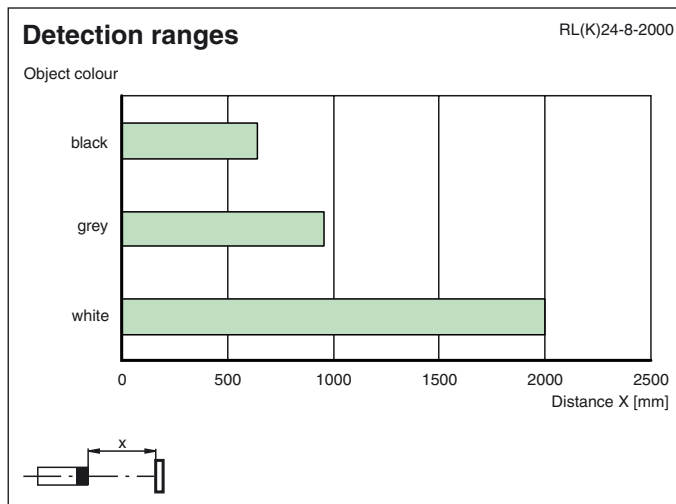
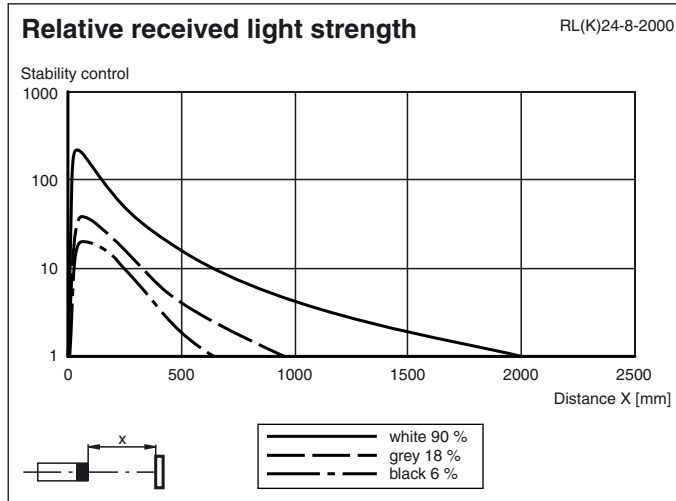
| | |
|---------------------|-------------------------------|
| Ambient temperature | -20 ... 60 °C (253 ... 333 K) |
| Storage temperature | -20 ... 75 °C (253 ... 348 K) |

Mechanical specifications

| | |
|-------------------|----------------------|
| Protection degree | IP65 |
| Connection | terminal compartment |
| Material | |
| Housing | GF17 |
| Optical face | glass |
| Mass | 100 g |

Curves/Diagrams





Release date: 2009-08-18 16:18 Date of issue: 2009-08-18 419236_ENG.xml