



Model Number

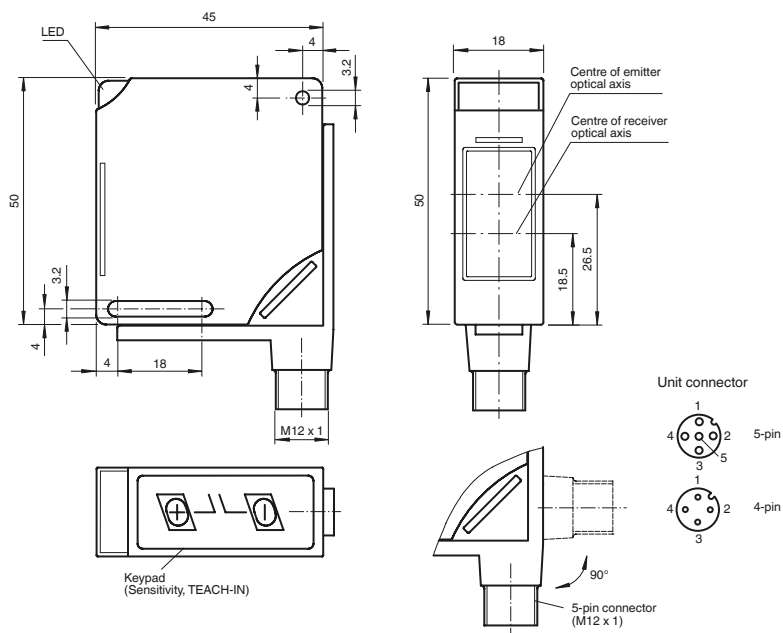
MLV11-54-LAS-AS-I/112

Retroreflective sensor with AS-Interface with 4-pin M12 connector, 90° adjustable position

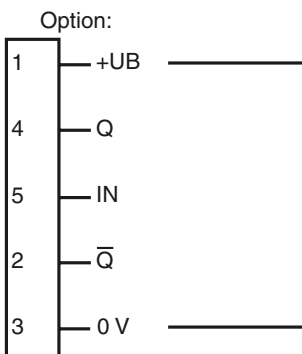
Features

- Sensing range up to 15 m
- Glare protected with polarization filter
- Visible red light
- Pre-fault indication and output (dynamic and static)
- Automatic adjustment of sensitivity per TEACH-IN
- Detection of partially transparent objects
- Parameterization via optical communication link (e.g. optional time increments)
- Degree of protection IP68
- All materials approved for food industry applications
- Multifunction input

Dimensions



Electrical connection



- = Light on
- = Dark on

Release date: 2019-08-23 12:42 Date of issue: 2019-08-23 421584_eng.xml

Refer to "General Notes Relating to Pepperl+Fuchs Product Information".

Technical data**General specifications**

| | |
|----------------------------|--|
| Effective detection range | 0 ... 15 m |
| Reflector distance | 300 ... 15000 mm |
| Reference target | H60 reflector |
| Light source | laser diode |
| Light type | 670 nm red light pulsed LASER-light (12 μ s), 2 mW peak power, laser class 2, eye-safe |
| Polarization filter | yes |
| Laser class | 2 |
| Diameter of the light spot | 50 mm at a distance of 15 m |
| Ambient light limit | 10000 Lux |

Indicators/operating means

| | |
|---------------------|--|
| Operation indicator | LED green |
| Function indicator | Teach-In: LED green flashing switching state: LED yellow pre-fault indicator: LED red flashing |
| Control elements | membrane keys for setting sensitivity and Teach-In |

Electrical specifications

| | | |
|--------------------------------|-------|--------------------------|
| Operating voltage | U_B | via AS-Interface network |
| Time delay before availability | t_v | ≤ 80 ms |

Output

| | | |
|---------------------|---------------|----------------|
| Switching type | light/dark on | |
| Signal output | AS-Interface | |
| Switching current | ≤ 35 mA | |
| Switching frequency | f | ≤ 1000 Hz |
| Response time | ≤ 0.5 ms | |
| Timer function | programmable | |

Standard conformity

| | |
|-----------|--------------|
| Standards | EN 60947-5-2 |
|-----------|--------------|

Ambient conditions

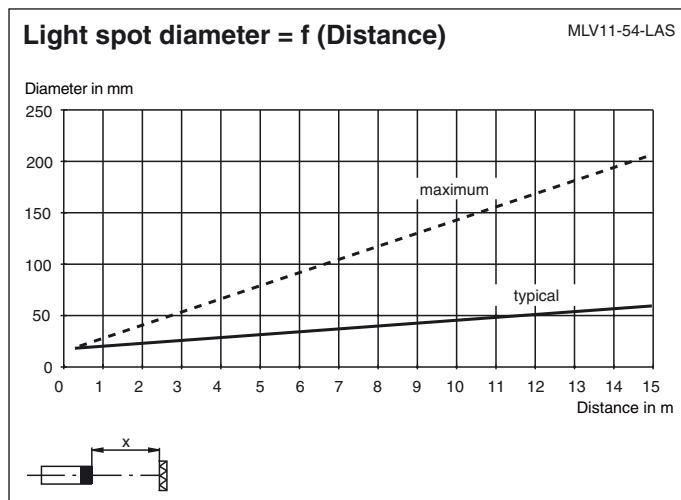
| | |
|---------------------|--------------------------------|
| Ambient temperature | -25 ... 70 °C (-13 ... 158 °F) |
| Storage temperature | -40 ... 70 °C (-40 ... 158 °F) |

Mechanical specifications

| | |
|----------------------|---|
| Housing width | 18 mm |
| Housing height | 50 mm |
| Housing depth | 45 mm |
| Degree of protection | IP68 |
| Connection | 4-pin M12 x 1 connector, 90° adjustable |
| Material | |
| Housing | PBT |
| Optical face | scratch resistant plastic lens |
| Connector | AlSi |
| Mass | 60 g |

Approvals and certificates

| | |
|-----------|----|
| Approvals | CE |
|-----------|----|

**AS-Interface programming**

| | |
|---------|---|
| Address | preset to 00, can be changed via Busmaster or programming devices |
| IO code | 1 |
| ID code | F |

• **Data bit**

| Bit | Function |
|-----|----------|
|-----|----------|

Refer to "General Notes Relating to Pepperl+Fuchs Product Information".

D0 switch output
D1 pre-fault indication (0=ON, 1=OFF)
D2 antivalent switch output
D3 function input

• **Parameter bit**

| Bit | Function |
|------------|-----------------|
| P0 | not used |
| P1 | not used |
| P2 | not used |
| P3 | not used |