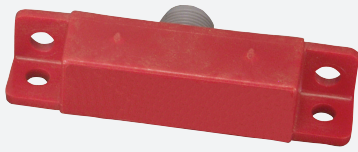


Magnetic field sensor

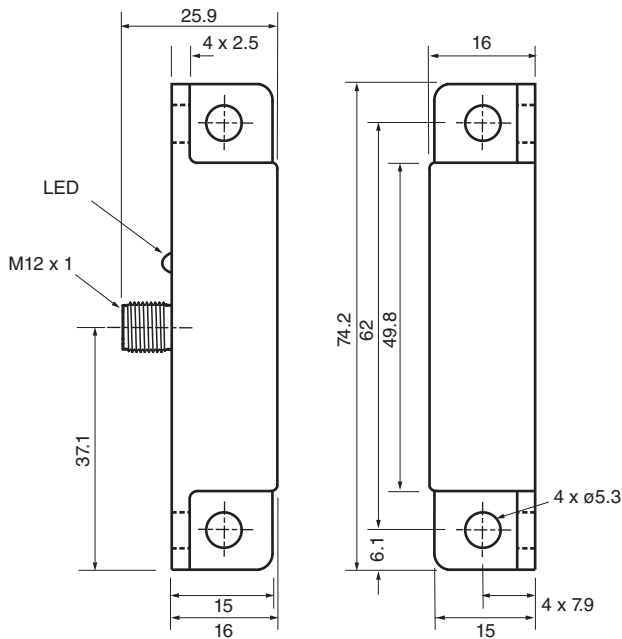
40FY28-33



- Hall Effect Sensor
- Door Interrupt Sensor
- Tamper resistant magnetic actuator



Dimensions



Technical Data

General specifications

| | | |
|--------------------------|-------|---------------------------------------------------------|
| Switching function | | Normally open (NO) |
| Output type | | NPN |
| Rated operating distance | s_n | Use either 41FY1 - 6.4 - 15.2 mm or 41FY2 - 7.6 - 19 mm |
| Installation | | non-flush |
| Output polarity | | DC |

Nominal ratings

| | | |
|--------------------------|-------|-----------------|
| Operating voltage | U_B | 10 ... 30 V DC |
| Hysteresis | H | 5 ... 25 % |
| Short-circuit protection | | yes |
| Voltage drop | U_d | ≤ 2.5 V DC |
| Repeat accuracy | | +/- 3 % |

Release date: 2020-04-09 Date of issue: 2020-09-03 Filename: 450033_eng.pdf

Refer to "General Notes Relating to Pepperl+Fuchs Product Information".

Pepperl+Fuchs Group
www.pepperl-fuchs.com

USA: +1 330 486 0001
fa-info@us.pepperl-fuchs.com

Germany: +49 621 776 1111
fa-info@de.pepperl-fuchs.com

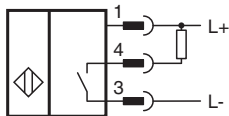
Singapore: +65 6779 9091
fa-info@sg.pepperl-fuchs.com

PEPPERL+FUCHS

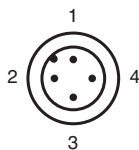
Technical Data

| | | |
|-------------------------------------------------|-------|-----------------------------------------|
| Operating current | I_L | ≤ 200 mA |
| Off-state current | I_r | ≤ 30 mA |
| No-load supply current | I_0 | ≤ 40 mA |
| Indicators/operating means | | |
| LED indicator | | switching state |
| Electrical specifications | | |
| Electrical rating | | 10 - 30 V DC |
| Compliance with standards and directives | | |
| Standard conformity | | |
| Standards | | EN 60947-5-2:2007 IEC 60947-5-2:2007 |
| Approvals and certificates | | |
| UL approval | | cULus Listed, General Purpose |
| CSA approval | | cCSAus Listed, General Purpose |
| Ambient conditions | | |
| Ambient temperature | | -30 ... 85 °C (-22 ... 185 °F) |
| Mechanical specifications | | |
| Connection type | | Connector M12 x 1 , 4-pin |
| Housing material | | Polycarbonate |
| Sensing face | | Polycarbonate |
| Degree of protection | | IP67 |

Connection




Connection Assignment



Wire colors in accordance with EN 60947-5-2

| | | |
|---|----|---------|
| 1 | BN | (brown) |
| 2 | WH | (white) |
| 3 | BU | (blue) |
| 4 | BK | (black) |



Accessories

| | | |
|-------------------------------------------------------------------------------------|--------------|--|
|  | 41FY1 | |
|-------------------------------------------------------------------------------------|--------------|--|

Release date: 2020-04-09 Date of issue: 2020-09-03 Filename: 450033_eng.pdf

Refer to "General Notes Relating to Pepperl+Fuchs Product Information".

Accessories

| | | |
|-----------------------------------------------------------------------------------|--------------------|---------------------------------------|
|  | 41FY2 | |
|  | V1-G-2M-PVC | Female cordset, M12, 4-pin, PVC cable |

Release date: 2020-04-09 Date of issue: 2020-09-03 Filename: 450033_eng.pdf

Refer to "General Notes Relating to Pepperl+Fuchs Product Information".

Pepperl+Fuchs Group
www.pepperl-fuchs.comUSA: +1 330 486 0001
fa-info@us.pepperl-fuchs.comGermany: +49 621 776 1111
fa-info@de.pepperl-fuchs.comSingapore: +65 6779 9091
fa-info@sg.pepperl-fuchs.com **PEPPERL+FUCHS**