



Model Number

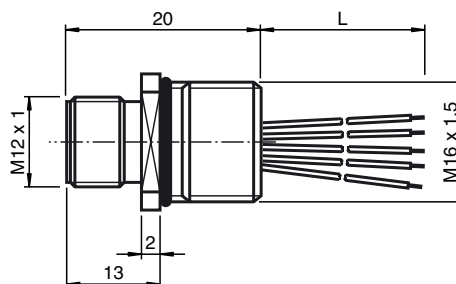
V15S-M16-500

Receptacles, M12/M16, 5-pin

Features

- Front/screw mounting
- Suitable for 2-, 3- and 4-wire technology

Dimensions



Technical data

General specifications

Number of pins	5
Connection 1	Male connector
Construction type 1	straight
Threading 1	M12
Connection 2	cable end
UL File Number	E191152

Electrical specifications

Operating voltage	U_B	max. 60 V DC
Test voltage		> 2000 V _{eff} AC
Operating current	I_B	max. 4 A
Volume resistance		< 3 mΩ
Insulation resistance		≥ 100 MΩ

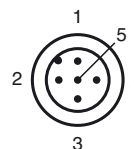
Ambient conditions

Ambient temperature	-25 ... 85 °C (-13 ... 185 °F)
Pollution degree	3

Mechanical specifications

Pin diameter	1 mm
Degree of protection	IP67
Connection	Tinned copper single leads, Ø1.2 ±0.07 mm
Material	
Contacts	CuZn
Contact surface	Au
Connector	Zinc die-casting, nickel-plated
Seal	NBR
Core insulation	TPE
Cable	
Cores	5 x 0.34 mm ²
Number of cores	5
Core cross-section	0.34 mm ²
Conductor construction	7 x 0.25 mm Ø
Length	L 500 mm
Installation	Front mounting

Electrical connection



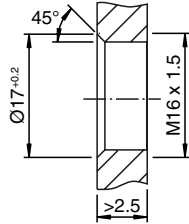
Release date: 2018-03-22 11:19 Date of issue: 2018-03-22 456937_eng.xml

Electrical connection

1	—————	BN
2	—————	WH
3	—————	BU
4	—————	BK
5	—————	GY

Note

Housing cutout for M16 fastening thread, mounting panel with thread:



Housing cutout for M16 fastening thread, mounting panel with feed-through hole (alternatively with surface as protection against rotation):

