

Receptacles

V3S-M8-500

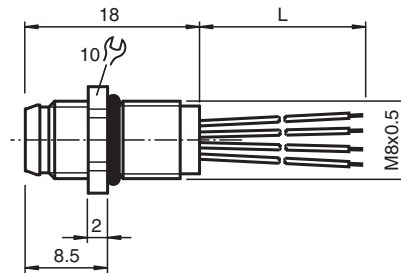


- Front/screw mounting
- Halogen-free stranded wires
- Degree of protection IP67

3-pin M8 receptacle



Dimensions



Dimension values see data table.

Image and drawing are generic for this device type and may deviate from the specific variant.

Technical Data

General specifications

Connector 1	
Connection	plug
Construction type	M8
Style	straight
Locking	screw connection
Number of pins	3
Coding	A-coded
Connector 2	
Connection	cable end

Electrical specifications

Operating voltage	U_B	max. 48 V AC / 60 V DC
Operating current	I_B	max. 4 A
Volume resistance		< 3 m Ω

Conformity

Release date: 2025-02-17 Date of issue: 2025-02-17 Filename: 456943_eng.pdf

Refer to "General Notes Relating to Pepperl+Fuchs Product Information".

Pepperl+Fuchs Group
www.pepperl-fuchs.com

USA: +1 330 486 0001
fa-info@us.pepperl-fuchs.com

Germany: +49 621 776 1111
fa-info@de.pepperl-fuchs.com

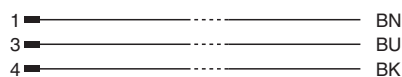
Singapore: +65 6779 9091
fa-info@sg.pepperl-fuchs.com

PEPPERL+FUCHS

Technical Data

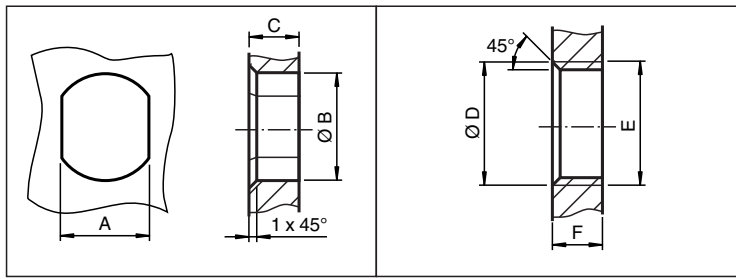
Degree of protection	EN 60529	
Plug connection	connector M8 x 1 : IEC 61076-2-104	
Flammability	IEC 60332-1-2	
Halogen-free	IEC 60754-1	
Approvals and certificates		
UL File Number	E191152	
Ambient conditions		
Ambient temperature		
Plug connector	-25 ... 85 °C (-13 ... 185 °F)	
Cable, fixed installation	-40 ... 105 °C (-40 ... 221 °F)	
Cable, flexing	-10 ... 105 °C (14 ... 221 °F)	
Pollution degree	3	
Mechanical specifications		
Plug connector		
Tightening torque	0.4 Nm	
Mating cycles	min. 100	
Degree of protection	IP67	
Connection	tinned copper single leads, Ø1.5 ±0.1 mm	
Cable		
Number of cores	3	
Core cross section	0.25 mm ²	
Cores color	Core 1: brown Core 3: blue Core 4: black	
Core construction	7 x 0.2 mm Ø AWG 24	
Length	L	500 mm
Installation	Front mounting M8 , tightening torque: 0.8 ... 1 Nm	
Mass	11.34 g	
Material		
Halogen-free	yes	
Plug connector		
Screw connection	brass, nickel-plated	
Seal	FKM	
Contact surface	gold plated (Au)	
Flammability	HB	
Cable		
Core insulation	PVC	
General information		
Scope of delivery	locknut not included	

Connection Assignment



Release date: 2025-02-17 Date of issue: 2025-02-17 Filename: 456943_eng.pdf

Mounting



	A	B	C	D	E	F
M8	7.1 ^{+0.1}	Ø 8.2 ^{+0.1}	2 - 4 mm	-	M8x0.5	2 - 4 mm
M12	11 ^{+0.1}	Ø 12.2 ^{+0.1}	< 4 mm	-	M12x1	< 4.5 mm
M16	13.5 ^{+0.1}	Ø 16.1	< 4.5 mm	Ø 17 ^{+0.2}	M16x1.5	> 2.5 mm
M20	13.5 ^{+0.1}	Ø 20.1	-	Ø 20 ^{+0.2}	M20x1.5	< 6 mm
PG9	13.5 ^{+0.1}	Ø 15.3 ^{+0.1}	< 4.5 mm	Ø 16	PG9	> 2.5 mm
PG13.5	18.8 ^{+0.1}	Ø 20.5 ^{+0.1}	-	Ø 22 ^{±0.1}	PG13.5	-

Release date: 2025-02-17 Date of issue: 2025-02-17 Filename: 456943_eng.pdf

Refer to "General Notes Relating to Pepperl+Fuchs Product Information".

Pepperl+Fuchs Group
www.pepperl-fuchs.com

USA: +1 330 486 0001
fa-info@us.pepperl-fuchs.com

Germany: +49 621 776 1111
fa-info@de.pepperl-fuchs.com

Singapore: +65 6779 9091
fa-info@sg.pepperl-fuchs.com