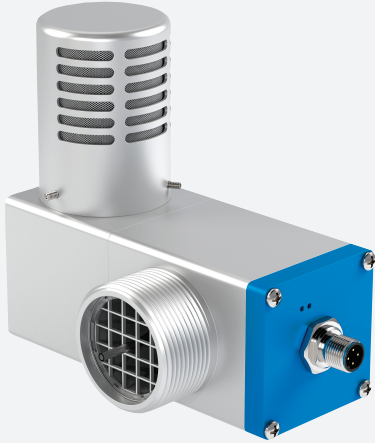


# 6000 Series Vent

## EPV-6000-\*\*-\*\*



- Maximum enclosure size 450 ft<sup>3</sup> (12.7 m<sup>3</sup>)
- Pressure relief vent with flow and pressure monitoring at the exhaust
- Universal mounting in any orientation
- 6000 Control Unit supports 2 vents
- Different vents for different applications

6000 series purge and pressurization system vent

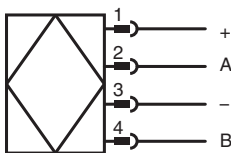


### Function

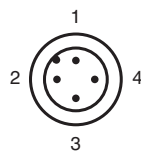
The EPV-6000 vent exhausts excess pressure from the enclosure and measures flow and pressure during operation. The 6000 series vent has a pressure transducer and thermal flow sensor that is connected to the 6000 EPCU. It is intrinsically safe through the galvanic isolation barrier within the 6000 EPCU.

Because measurement of the flow is always at the exhaust of the pressurized enclosure, the vent is located on the enclosure(s) such that it is venting to the atmosphere. The EPV-6000 vent can be mounted vertically or horizontally and is not gravity dependent. The EPV-6000 vent can be mounted external or internally to the enclosure. When mounting internally, only the vent cap is exposed to the outside atmosphere.

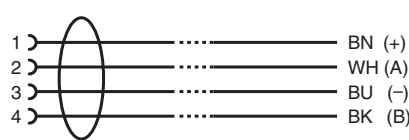
### Connection



EPV-6000-\*\*-\*\*



Cordset, M12, 4-pin, shielded



6000 Control Unit

### Technical Data

General specifications	
Series	6000 Series
Number of volume exchanges	4 to 19
Hazardous environment	gas, dust, gas and dust
Electrical specifications	
Connection	
Power	Intrinsically Safe back to 6000 control unit
Signal	BUS back to 6000 control unit
Connection	M12 connector, 4-pin

Release date: 2023-01-20 Date of issue: 2023-01-20 Filename: 514686\_eng.pdf

Refer to "General Notes Relating to Pepperl+Fuchs Product Information".

## Technical Data

<b>Indicators/settings</b>		
LED indication		power: green vent number: yellow, on for second vent
<b>Pneumatic parameters</b>		
Protective gas supply		instrument grade air or inert gas
Safe pressure		Gas: 0.25" wc (6.4 mm wc) (0.625 mbar) (62 Pa) Dust: 0.65" wc (16.5 mm wc) (1.6 mbar) (162 Pa) Gas and Dust: 0.65" wc (16.5 mm wc) (1.6 mbar) (162 Pa)
Enclosure pressure		0 ... 9.9" wc (25 mbar) (250 mm wc)
Max. enclosure pressure		25" wc (62 mbar) (625 mm wc)
Purge flow rate		Maximum flow rate measurement for enclosure size (enclosure volume:flow rate): < 20 ft <sup>3</sup> (0.57 m <sup>3</sup> ): 5, 12 SCFM (141, 340 l/min), or dynamic 20 ... 30 ft <sup>3</sup> (0.57 ... 0.85 m <sup>3</sup> ): 5, 12, 20 SCFM (141, 340, 565 l/min), or dynamic > 30 ft <sup>3</sup> (0.85 m <sup>3</sup> ): 5, 12, 20, 30 SCFM (141, 340, 565, 850 l/min), or dynamic
Purge flow and enclosure pressure rate		With EPV-6000-xx-01, EPV-6000-xx-02 5 SCFM @ 1.5" wc, (141 l/min @ 3.7 mbar) 12 SCFM @ 2.0" wc, (340 l/min @ 5.0 mbar) 20 SCFM @ 2.7" wc, (565 l/min @ 6.7 mbar) 30 SCFM @ 4.1" wc, (850 l/min @ 10.2 mbar) With EPV-6000-xx-03, EPV-6000-xx-04 5 SCFM @ 2.1" wc, (141 l/min @ 5.2 mbar) 12 SCFM @ 2.6" wc, (340 l/min @ 6.5 mbar) 20 SCFM @ 4.1" wc, (565 l/min @ 10.2 mbar) 30 SCFM @ 5.3" wc, (850 l/min @ 13.2 mbar) With EPV-6000-xx-05, 06 5 SCFM @ 1.8" wc, (141 l/min @ 4.5 mbar) 12 SCFM @ 2.9" wc, (340 l/min @ 7.3 mbar) 20 SCFM @ 7.4" wc, (565 l/min @ 18.5 mbar)
Flow rate for leakage compensation		Depends on enclosure seal. With EPV-6000-xx-01, EPV-6000-xx-02 0.35 SCFM @ 0.25" wc (10.0 l/min @ 0.63 mbar) 1.0 SCFM @ 0.75" wc (28.0 l/min @ 1.9 mbar) With EPV-6000-xx-03, EPV-6000-xx-03 0.22 SCFM @ 0.25" wc (6.2 l/min @ 0.63 mbar) 0.58 SCFM @ 0.75" wc (16.4 l/min @ 1.9 mbar) With EPV-6000-xx-05, EPV-6000-xx-06 0.15 SCFM @ 0.25" wc (4.2 l/min @ 0.63 mbar) 0.35 SCFM @ 0.75" wc (10.0 l/min @ 1.9 mbar)
Breaking pressure		EPV-6000-xx-01, EPV-6000-xx-02: 0.8" wc (2.0 mbar) EPV-6000-xx-03, EPV-6000-xx-04: 1.3" to 1.4" wc (3.2 to 3.5 mbar) EPV-6000-xx-05, EPV-6000-xx-06: 1.4" to 1.5" wc (3.5 to 3.8 mbar)
<b>Directive conformity</b>		
Electromagnetic compatibility		
Directive 2014/30/EU		EN 61326-1:2013 EN 61000-6-2:2005
RoHS		
Directive 2011/65/EU (RoHS)		EN IEC 63000:2018
<b>Ambient conditions</b>		
Ambient temperature		-20 ... 60 °C (-4 ... 140 °F)
Storage temperature		-30 ... 80 °C (-22 ... 176 °F)
Relative humidity		5 ... 95 %, noncondensing
Vibration resistance		5 ... 100 Hz, 1 g, 12 m/s <sup>2</sup> , all axes
Impact resistance		30 g, 11 ms, all axes
<b>Mechanical specifications</b>		
Material		EPV-6000-AA-.... Cap: marine grade 5052 anodized aluminum, marine grade 6061T6 anodized aluminum EPV-6000-SS-.... Cap: 316L (UNS S31603) stainless steel; Body: marine grade 6061T6 anodized aluminum
Spark arrestor		304 (UNS S30400) stainless steel
Installation		- any orientation to enclosure - not gravity dependent - internal and external mounting possible
Mass		approx. 1.4 kg (3.1 lb)
Dimensions		127.5 x 146 x 82.5 mm (5.05 x 5.75 x 3.25 inch)
Mounting		1 1/2" NPT knockout (50.8 mm (2") hole) with sealed nut
<b>Data for application in connection with hazardous areas</b>		

Release date: 2023-01-20 Date of issue: 2023-01-20 Filename: 514686\_eng.pdf

Refer to "General Notes Relating to Pepperl+Fuchs Product Information".

 Pepperl+Fuchs Group  
www.pepperl-fuchs.com

 USA: +1 330 486 0002  
pa-info@us.pepperl-fuchs.com

 Germany: +49 621 776 2222  
pa-info@de.pepperl-fuchs.com

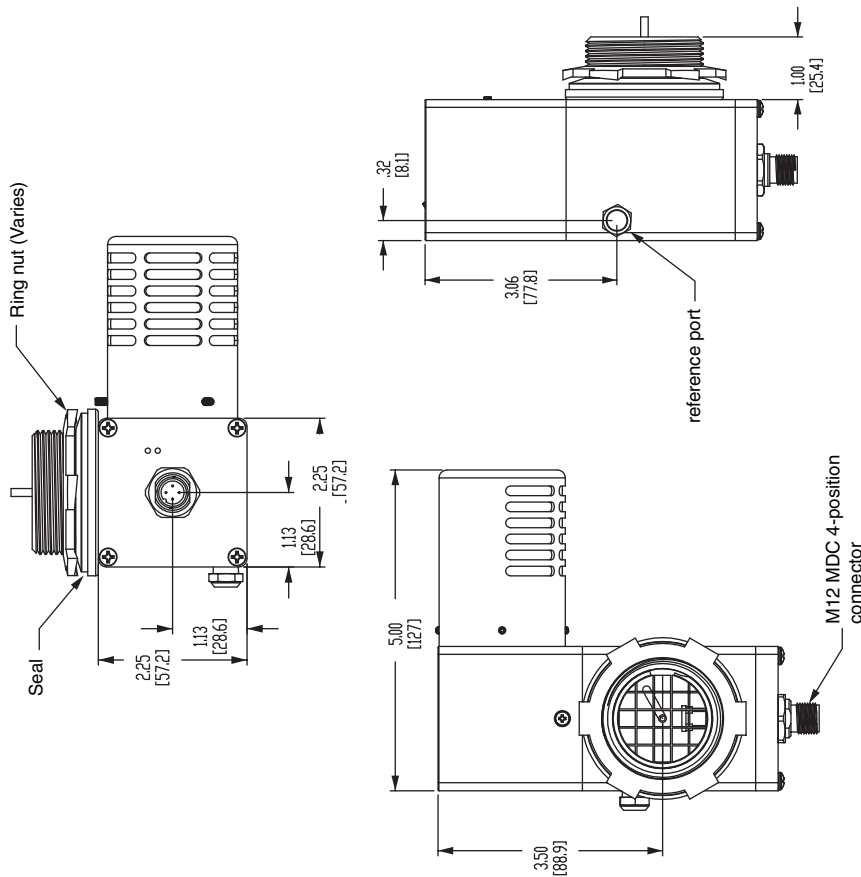
 Singapore: +65 6779 9091  
pa-info@sg.pepperl-fuchs.com

 **PEPPERL+FUCHS**

**Technical Data**

EU-type examination certificate	DEMKO 15 ATEX 1622X
Marking	II 2 G Ex ib [pxb Gb] IIC T4 Gb II 2 D Ex ib [pxb Db] IIIC T135 °C Db -20 °C ≤ Ta ≤ 60 °C
Directive conformity	
Directive 2014/34/EU	EN IEC 60079-0:2018 , EN 60079-2:2014 , EN 60079-11:2012
<b>International approvals</b>	
UL approval	cULus Class I, Division 1, Groups A, B, C, D IP66/Type 4X Class I, Zone 1, Groups IIC, T4 Class II, Division 1, Groups E, F, G Class II, Zone 21, Group IIIC T135 °C -20 °C ≤ TA ≤ 60 °C Ex i intrinsically safe
IECEx approval	Ex ib [pxb Gb] IIC T4 Gb Ex ib [pxb Db] IIIC T135 °C Db -20 °C ≤ Ta ≤ 60 °C IECEx UL 15.0147X
<b>General information</b>	
Supplementary information	Observe the certificates, declarations of conformity, instruction manuals, and manuals where applicable. For information see <a href="http://www.pepperl-fuchs.com">www.pepperl-fuchs.com</a> .

**Dimensions**



Release date: 2023-01-20 Date of issue: 2023-01-20 Filename: 514686\_eng.pdf

Refer to "General Notes Relating to Pepperl+Fuchs Product Information".

Pepperl+Fuchs Group  
[www.pepperl-fuchs.com](http://www.pepperl-fuchs.com)

USA: +1 330 486 0002  
[pa-info@us.pepperl-fuchs.com](mailto:pa-info@us.pepperl-fuchs.com)

Germany: +49 621 776 2222  
[pa-info@de.pepperl-fuchs.com](mailto:pa-info@de.pepperl-fuchs.com)

Singapore: +65 6779 9091  
[pa-info@sg.pepperl-fuchs.com](mailto:pa-info@sg.pepperl-fuchs.com)

**Type Code**

**E P V - 6 0 0 0 - A A - 0 1**

**Configuration**

- 01** standard configuration
- 02** standard configuration, 2nd vent
- 03** low leakage rate for pressurization/low flow
- 04** low leakage rate for pressurization/low flow, 2nd vent
- 05** very low leakage rate for pressurization/low flow
- 06** very low leakage rate for pressurization/low flow, 2nd vent

**Body type**

- AA** anodized aluminum body and cap
- SS** anodized aluminum body and 316L stainless steel cap

Release date: 2023-01-20 Date of issue: 2023-01-20 Filename: 514686\_eng.pdf