

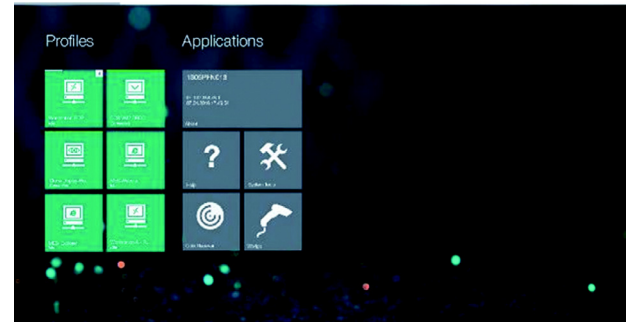
## Features

- Restricted Web browser (Internet Explorer-based): Allows the secure direct access of HTML-based MES and SCADA systems
- Restricted Web browser (Chrome-Engine-based): HTML5 compatible web browser that enables the secure access of websites and web-applications.
- Desktop Sharing: Clone a Remote Monitor to work with one host system from several Remote Monitors simultaneously
- Raritan KVM Profile: Client allows to directly connect to Raritan Dominion KX II-101 V2 KVM-Switch

## Application

Pepperl+Fuchs VisuNet Remote Monitors (VisuNet RMs) are industrial-grade thin client solutions that give operators a simplified, modern user interface. The firmware of a VisuNet RM, called VisuNet RM Shell, enables users to easily access applications that run on process control systems via Ethernet. With the RM Shell 5 pro license key, additional features can be enabled in RM Shell 5. Refer to the feature table to see which features are unlocked.

# PRO License



<b>Software</b>	
Operating system	based on Microsoft Windows 10 IoT Enterprise LTSC
Languages	English
Licensing	
Available licenses	1x license key to enable "Pro" features of one VisuNet Remote Monitor with pre-installed RM Shell 5.x
Installation	Licenses can only be enabled in the RM Shell 5.x by user role "Administrator".
Associated products	VisuNet Remote Monitors with pre-installed RM Shell 5.x

## License Bundles

Product	Number of Licenses	Part Number
VISUNET-RM-SHELL5-PRO-5	5	548290
VISUNET-RM-SHELL5-PRO-10	10	548291
VISUNET-RM-SHELL5-PRO-30	30	548292
VISUNET-RM-SHELL5-PRO-50	50	548293

## Features unlocked with PRO License (#548289)

Features	Description
Restricted web browser, based on Internet Explorer	Fast HTML browser that uses Internet Explorer for rendering websites. Operators can be restricted to specified websites.
Restricted web browser, based on Chrome engine	Fast HTML5 browser that uses the Google Chrome rendering engine. Operators can be restricted to specified websites.
Desktop sharing	This feature allows users to clone a Remote Monitor and display its desktop on other VisuNet Remote Monitors (requires RM Shell 4.0.3 or later)
Raritan KVM profile	Client allows direct connection to Raritan Dominion KX II-101 V2 KVM-Switch

Release date 2018-03-01 21:56 Date of issue 2018-03-01 548289\_eng.xml

Refer to "General Notes Relating to Pepperl+Fuchs Product Information".

Pepperl+Fuchs Group  
www.pepperl-fuchs.com

USA: +1 330 486 0002  
pa-info@us.pepperl-fuchs.com

Germany: +49 621 776 2222  
pa-info@de.pepperl-fuchs.com

Singapore: +65 6779 9091  
pa-info@sg.pepperl-fuchs.com