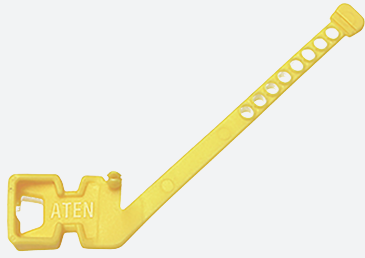


Cable lock

ATEN-LockPro



- Innovative design improves stability and flexibility
- One-piece and reusable design for easy installation and removal
- Ensures strong and reliable cable connections
- Universal design for securing most cables
- Environmentally safe – RoHS compliant and recyclable

Latch that allows to lock cables to BTC

Technical Data

Ambient conditions	
Storage temperature	-20 ... 60 °C (-4 ... 140 °F)
Relative humidity	95 % , non-condensing
Mechanical specifications	
Mass	1 g
Dimensions	8.61 mm x 6.47 mm x 0.66 mm
General information	
Packing unit	10 item(s)

Release date: 2023-12-20 Date of issue: 2023-12-20 Filename: 548400_eng.pdf

Refer to "General Notes Relating to Pepperl+Fuchs Product Information".

Pepperl+Fuchs Group
www.pepperl-fuchs.com

USA: +1 330 486 0002
pa-info@us.pepperl-fuchs.com

Germany: +49 621 776 2222
pa-info@de.pepperl-fuchs.com

Singapore: +65 6779 9091
pa-info@sg.pepperl-fuchs.com

 PEPPERL+FUCHS