

Safety evaluators

AOS 3230-W

- Safety control unit
- Safety category 3 according to EN61496-1
- For evaluating the LOW-POWER SIGNAL safety thru-beam sensor

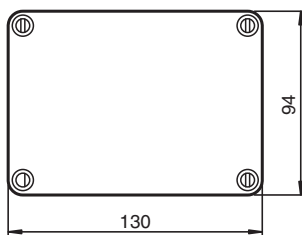
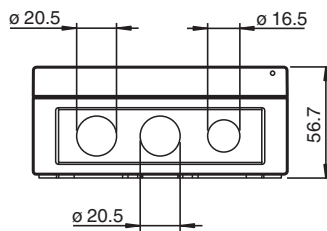
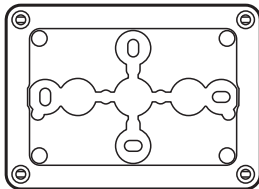
WITT Sensoric



Safety evaluators



Dimensions



Technical Data

Indicators/operating means

Operation indicator	LED green: power on
Function indicator	LED yellow: Safety loop interrupted LED green: Safety loop closed

Electrical specifications

Operating voltage	U_B	230 V AC \pm 10 %
Power consumption	P_0	max. 6 VA

Output

Output type	relay, NC contact
Switching type	light-on

Release date: 2024-02-15 Date of issue: 2024-02-20 Filename: 64319247_eng.pdf

Refer to "General Notes Relating to Pepperl+Fuchs Product Information".

Pepperl+Fuchs Group
www.pepperl-fuchs.com

USA: +1 330 486 0001
fa-info@us.pepperl-fuchs.com

Germany: +49 621 776 1111
fa-info@de.pepperl-fuchs.com

Singapore: +65 6779 9091
fa-info@sg.pepperl-fuchs.com

PF PEPPERL+FUCHS

Technical Data

Switching voltage	250 V AC / 50 V DC
Switching current	max. 1.25 A
Energized/De-energized delay	typ. 500 ms
Response time	≤ 20 ms
Output 1	
Output type	Signal output change-over contact
Switching voltage	250 V AC / 50 V DC
Switching current	max. 1.25 A
Conformity	
Functional safety	ISO 13849-1:2015 , Cat. 3 PL d
Product standard	EN 61000-6-2, EN 61000-6-3
Ambient conditions	
Ambient temperature	5 ... 55 °C (41 ... 131 °F)
Storage temperature	-25 ... 65 °C (-13 ... 149 °F)
Mechanical specifications	
Degree of protection	IP66 according to EN 60529
Connection	screw terminals , lead cross section 2 x 1 mm ²
Material	
Housing	Polycarbonate
Mass	590 g
Dimensions	
Height	95 mm
Width	130 mm
Depth	57 mm