

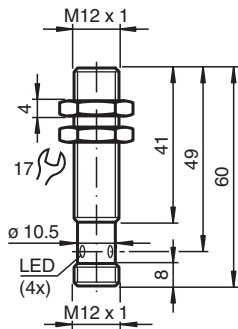
Magnetic field sensor MMB70-12GH50-1N-V1



- Comfort series
- 70 mm flush



Dimensions



Technical Data

General specifications		
Switching function		Normally open (NO)
Output type		NAMUR
Rated operating distance	s_n	5 ... 70 mm
Installation		flush in non-magnetic metal
Output type		2-wire
Nominal ratings		
Nominal voltage	U_o	8.2 V (R_i approx. 1 k Ω)
Switching frequency	f	0 ... 1000 Hz
Current consumption		
Magnet detected		≥ 2.3 mA
Magnet not detected		≤ 1 mA
Switching state indicator		LED, yellow
Safety-relevant product characteristics		
MTTF _d		2828 a
Mission Time (T_M)		20 a
Diagnostic Coverage (DC)		0 %

Release date: 2026-02-26 Date of issue: 2026-02-26 Filename: 70108302_eng.pdf

Refer to "General Notes Relating to Pepperl+Fuchs Product Information".

Pepperl+Fuchs Group
www.pepperl-fuchs.com

USA: +1 330 486 0001
fa-info@us.pepperl-fuchs.com

Germany: +49 621 776 1111
fa-info@de.pepperl-fuchs.com

Singapore: +65 6779 9091
fa-info@sg.pepperl-fuchs.com

PEPPERL+FUCHS

Technical Data

Compliance with standards and directives

Standard conformity		
NAMUR		EN 60947-5-6:2000
Standards		EN 60947-5-2:2007 EN 60947-5-2/A1:2012

Approvals and certificates

IECEX approval		
Equipment protection level Ga		IECEX TUN 20.0007
Equipment protection level Da		IECEX TUN 20.0007
ATEX approval		
Equipment protection level Ga		TÜV 20 ATEX 241336
Equipment protection level Da		TÜV 20 ATEX 241336

Ambient conditions

Ambient temperature		-25 ... 70 °C (-13 ... 158 °F)
---------------------	--	--------------------------------

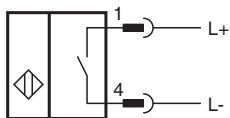
Mechanical specifications

Connection type		Connector plug
Housing material		Stainless steel 1.4404 / AISI 316L
Sensing face		Stainless steel 1.4404 / AISI 316L
Degree of protection		IP67
Connector		
Threading		M12 x 1
Number of pins		4
Dimensions		
Length		60 mm
Diameter		12 mm

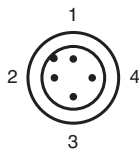
General information

Use in the hazardous area		see instruction manuals
---------------------------	--	-------------------------

Connection Assignment

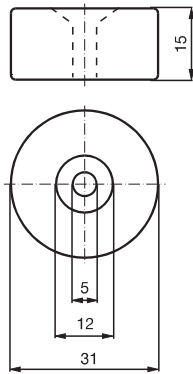


Connection Assignment

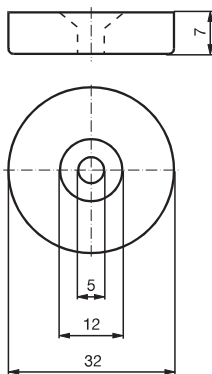


Additional Information

Magnet DM 60-31-15



Magnet DM 25-32-07



Release date: 2026-02-26 Date of issue: 2026-02-26 Filename: 70108302_eng.pdf

Refer to "General Notes Relating to Pepperl+Fuchs Product Information".

Pepperl+Fuchs Group
www.pepperl-fuchs.com

USA: +1 330 486 0001
fa-info@us.pepperl-fuchs.com

Germany: +49 621 776 1111
fa-info@de.pepperl-fuchs.com

Singapore: +65 6779 9091
fa-info@sg.pepperl-fuchs.com

 **PEPPERL+FUCHS**