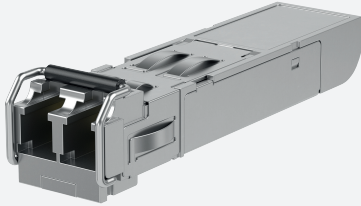


SFP: 100BASE-FX Fast Ethernet Multi-mode Fiber Extended Temperature



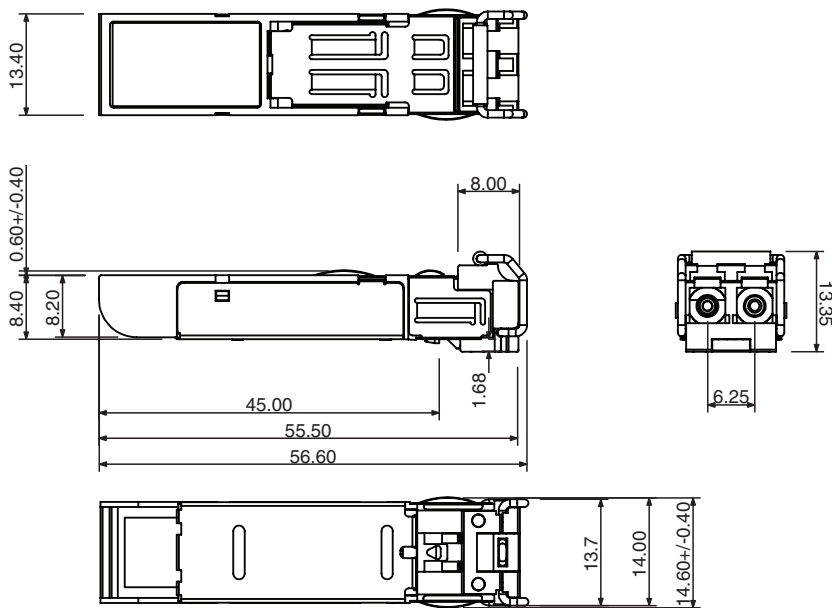
SFP-M-2KM-F-W

- Industry standard small form pluggable (SFP) package
- SFP Multi-Source Agreement compliant
- Hot pluggable
- Class 1 laser product complies with EN 60825-1
- Single power supply 3.3V
- TTL signal detect indicator
- Duplex LC connector
- Extended temperature range: -40 to 85° C

Multi-mode 2KM 100BASE-FX Fast Ethernet Fiber SFP



Dimensions



Technical Data

Ethernet Interface

Standards	
IEEE802.3u 100BASE-FX	yes

Interface 1

Interface type	100BASE-FX Fast Ethernet fiber
Physical	SFP, Hot pluggable
Transfer rate	155 Mbps

Fiber optics functionality

Release date: 2021-06-02 Date of issue: 2021-06-02 Filename: 70116432_eng.pdf

Refer to "General Notes Relating to Pepperl+Fuchs Product Information".

Pepperl+Fuchs Group
www.pepperl-fuchs.com

USA: +1 330 486 0001
fa-info@us.pepperl-fuchs.com

Germany: +49 621 776 1111
fa-info@de.pepperl-fuchs.com

Singapore: +65 6779 9091
fa-info@sg.pepperl-fuchs.com

pf PEPPERL+FUCHS

Technical Data

Wave length	1310 nm
Cable type	50/125µm or 62.5/125µm Multi-mode
Cable length	max. 2 km
Connector type	1 Duplex LC
Transmit power (optical)	-20 ... -14 dBm
Receive sensitivity	-31 ... -8 dBm
Link budget	11 dBm
Directive conformity	
Electromagnetic compatibility	
Directive 2014/30/EU	EN55024, IEC 61000-4-2, IEC 61000-4-3, IEC 61000-4-4, IEC 61000-4-6, IEC 61000-4-8
Standard conformity	
Emitted interference	CISPR 22 , FCC Part 15 Subpart B Class A , EN61000-6-4, IEC61000-6-4
Noise immunity	EN 55024
Standards	SFP Multi-Source (MSA) compliant Class 1 laser product complies with EN 60825-1
Ambient conditions	
Ambient temperature	-40 ... 85 °C (-40 ... 185 °F)
Storage temperature	-40 ... 85 °C (-40 ... 185 °F)
Relative humidity	max. 95 %
Mechanical specifications	
Mass	17 g