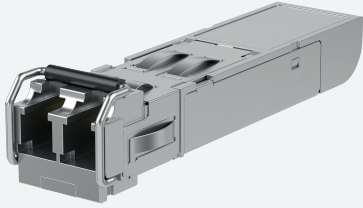


SFP: 1000BASE-LX Gigabit Ethernet Single-mode Fiber Extended Temperature

SFP-S-70KM-G-W

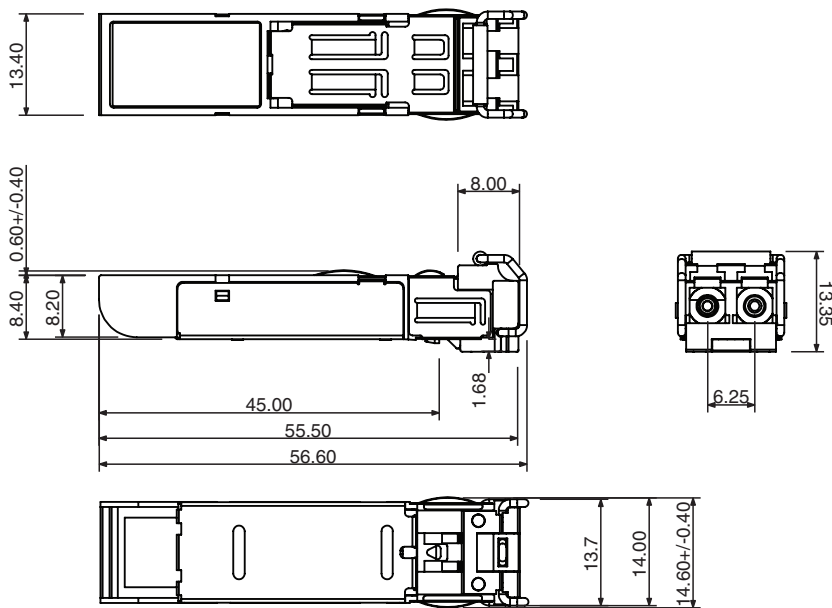


- Industry standard small form pluggable (SFP) package
- SFP Multi-Source Agreement compliant
- Hot pluggable
- Class 1 laser product complies with EN 60825-1
- Single power supply 3.3V
- TTL signal detect indicator
- Duplex LC connector
- Extended temperature range: -40 to 85° C

Single-mode 70KM 1000BASE-LX Gigabit Ethernet Fiber SFP



Dimensions



Release date: 2022-02-15 Date of issue: 2022-02-15 Filename: 70116437_eng.pdf

Technical Data

Ethernet Interface

Standards

| | |
|------------------------|-----|
| IEEE802.3z 1000BASE-LX | yes |
|------------------------|-----|

Interface 1

| | |
|----------------|------------------------------------|
| Interface type | 1000BASE-LX Gigabit Ethernet Fiber |
| Physical | SFP, Hot pluggable |
| Transfer rate | 1.25 Gbps |

Fiber optics functionality

Refer to "General Notes Relating to Pepperl+Fuchs Product Information".

Technical Data

| | |
|----------------------------------|--|
| Wave length | 1550 nm |
| Cable type | 9/125µm Single-mode |
| Cable length | max. 70 km |
| Connector type | 1 Duplex LC |
| Transmit power (optical) | 0 ... 5 dBm |
| Receive sensitivity | -27 ... -3 dBm |
| Link budget | 27 dBm |
| Directive conformity | |
| Electromagnetic compatibility | |
| Directive 2014/30/EU | EN55024, IEC 61000-4-2, IEC 61000-4-3, IEC 61000-4-4, IEC 61000-4-6, IEC 61000-4-8 |
| Standard conformity | |
| Emitted interference | CISPR 22 , FCC Part 15 Subpart B Class A , EN61000-6-4, IEC61000-6-4 |
| Noise immunity | EN 55024 |
| Standards | SFP Multi-Source (MSA) compliant Class 1 laser product complies with EN 60825-1 |
| Ambient conditions | |
| Ambient temperature | -40 ... 85 °C (-40 ... 185 °F) |
| Storage temperature | -40 ... 85 °C (-40 ... 185 °F) |
| Relative humidity | max. 95 % |
| Mechanical specifications | |
| Mass | 17 g |