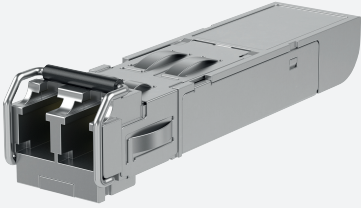


SFP: 100BASE-ZX Fast Ethernet Single-mode Fiber Extended Temperature



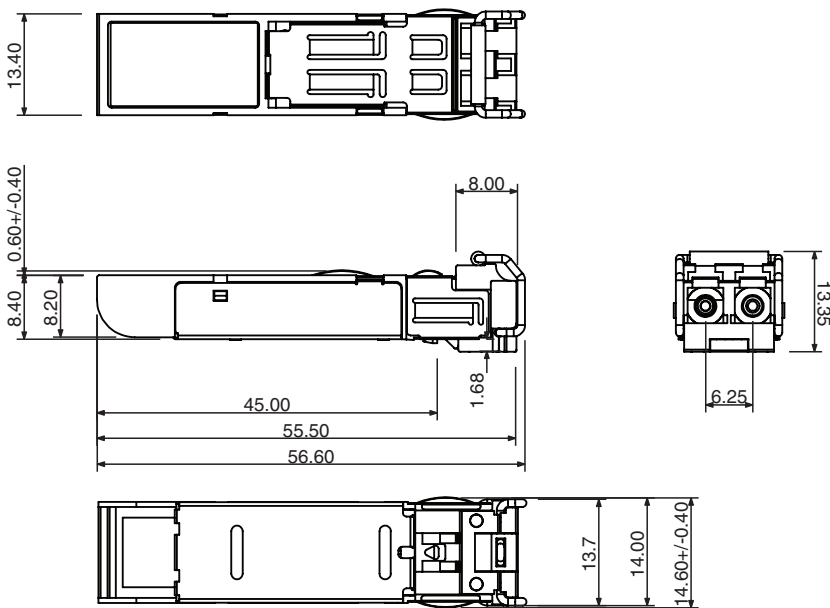
SFP-S-100KM-F-W

- Industry standard small form pluggable (SFP) package
- SFP Multi-Source Agreement compliant
- Hot pluggable
- Class 1 laser product complies with EN 60825-1
- Single power supply 3.3V
- TTL signal detect indicator
- Duplex LC connector
- Extended temperature range: -40 to 85° C

Single-mode 100KM 100BASE-ZX Fast Ethernet Fiber SFP



Dimensions



Technical Data

Ethernet Interface

Standards

IEEE802.3u 100BASE-FX yes

Interface 1

Interface type 100BASE-ZX Fast Ethernet Fiber

Physical SFP, Hot pluggable

Transfer rate 155 Mbps

Fiber optics functionality

Release date: 2022-02-15 Date of issue: 2022-02-15 Filename: 70116442_eng.pdf

Refer to "General Notes Relating to Pepperl+Fuchs Product Information".

Pepperl+Fuchs Group
www.pepperl-fuchs.com

USA: +1 330 486 0001
fa-info@us.pepperl-fuchs.com

Germany: +49 621 776 1111
fa-info@de.pepperl-fuchs.com

Singapore: +65 6779 9091
fa-info@sg.pepperl-fuchs.com

PEPPERL+FUCHS

Technical Data

Wave length	1550 nm
Cable type	9/125µm Single-mode
Cable length	max. 100 km
Connector type	1 Duplex LC
Transmit power (optical)	-5 ... 0 dBm
Receive sensitivity	-35 ... 0 dBm
Link budget	30 dBm
Directive conformity	
Electromagnetic compatibility	
Directive 2014/30/EU	EN55024, IEC 61000-4-2, IEC 61000-4-3, IEC 61000-4-4, IEC 61000-4-6, IEC 61000-4-8
Standard conformity	
Emitted interference	CISPR 22 , FCC Part 15 Subpart B Class A , EN61000-6-4, IEC61000-6-4
Noise immunity	EN 55024
Standards	SFP Multi-Source (MSA) compliant Class 1 laser product complies with EN 60825-1
Ambient conditions	
Ambient temperature	-40 ... 85 °C (-40 ... 185 °F)
Storage temperature	-40 ... 85 °C (-40 ... 185 °F)
Relative humidity	max. 95 %
Mechanical specifications	
Mass	17 g