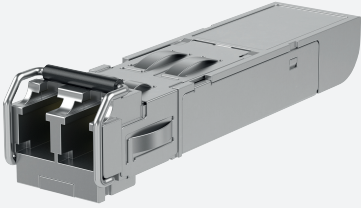


SFP: 100BASE-BX Fast Ethernet Single-mode BiDi-A Fiber Extended Temperature



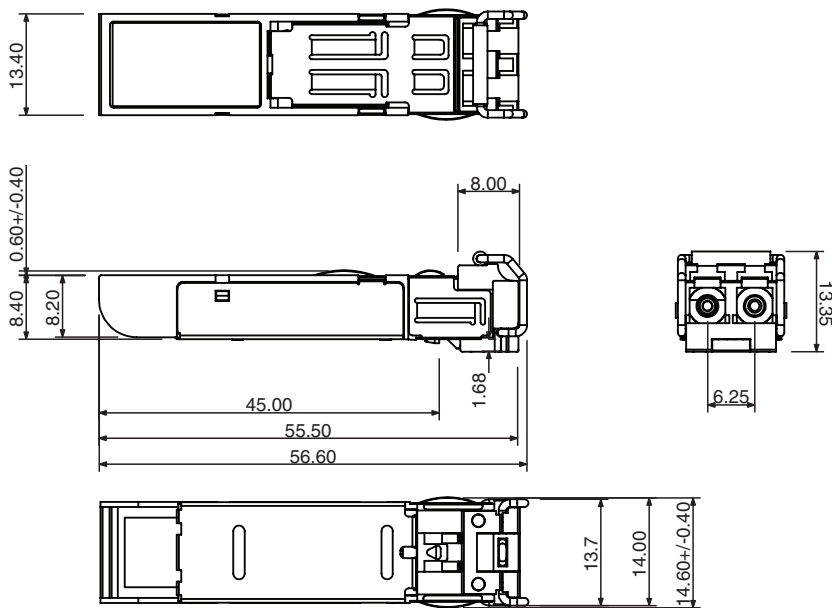
SFP-S-20KM-F-W-BIDI-A

- Industry standard small form pluggable (SFP) package
- SFP Multi-Source Agreement compliant
- Hot pluggable
- Class 1 laser product complies with EN 60825-1
- Single power supply 3.3V
- TTL signal detect indicator
- Duplex LC connector
- Extended temperature range: -40 to 85° C

Single-mode BiDi-A 20KM 100BASE-BX Fast Ethernet Fiber SFP



Dimensions



Technical Data

Ethernet Interface

Standards

IEEE802.3ah 100BASE-BX	yes
------------------------	-----

Interface 1

Interface type	100BASE-BX Fast Ethernet Fiber
Physical	SFP, Hot pluggable
Transfer rate	155 Mbps

Fiber optics functionality

Release date: 2021-06-02 Date of issue: 2021-06-02 Filename: 70116443_eng.pdf

Refer to "General Notes Relating to Pepperl+Fuchs Product Information".

Pepperl+Fuchs Group
www.pepperl-fuchs.com

USA: +1 330 486 0001
fa-info@us.pepperl-fuchs.com

Germany: +49 621 776 1111
fa-info@de.pepperl-fuchs.com

Singapore: +65 6779 9091
fa-info@sg.pepperl-fuchs.com

 PEPPERL+FUCHS

Technical Data

Wave length		TX: 1310 nm RX: 1550 nm
Cable type		9/125µm Single-mode BiDi-A
Cable length		max. 20 km
Connector type		1 Duplex LC
Transmit power (optical)		-14 ... -8 dBm
Receive sensitivity		-32 ... 0 dBm
Link budget		18 dBm
Directive conformity		
Electromagnetic compatibility		
Directive 2014/30/EU		EN55024, IEC 61000-4-2, IEC 61000-4-3, IEC 61000-4-4, IEC 61000-4-6, IEC 61000-4-8
Standard conformity		
Emitted interference		CISPR 22 , FCC Part 15 Subpart B Class A , EN61000-6-4, IEC61000-6-4
Noise immunity		EN 55024
Standards		SFP Multi-Source (MSA) compliant Class 1 laser product complies with EN 60825-1
Ambient conditions		
Ambient temperature		-40 ... 85 °C (-40 ... 185 °F)
Storage temperature		-40 ... 85 °C (-40 ... 185 °F)
Relative humidity		max. 95 %
Mechanical specifications		
Mass		17 g