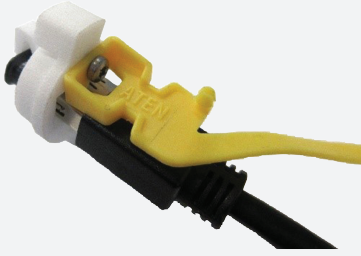


Bluetooth®-Kit for VisuNet FLX Systems

KIT-BT-V1-N0



- Compatible with VisuNet FLX housing AG-3200-*
- Consists of USB stick, cable and socket wrench for mounting
- Bluetooth® standards: v4.0 (Backwards compatible with Bluetooth® v2.0, v2.1 and v3.0)
- Certification: CE, FCC
- Prepared for mounting into VisuNet FLX blind plug dome

Bluetooth®-Kit for VisuNet FLX Systems

Function

The Bluetooth® adapter allows your VisuNet FLX System to wirelessly communicate with other nearby Bluetooth® v2.0, v2.1 and Bluetooth® v4.1 enabled devices. The Bluetooth-Kit must be ordered additionally and can easily be installed. For the Bluetooth® application an additional driver is necessary. Please refer to the software tools to install your required driver. Simple pair the devices via Windows® Dialog.

Technical Data

Supply	
Power supply	5 V DC (Power supply via USB) Crystal Oscillator: 20 MHz
Electrical specifications	
Data rate	up to 3 MBit/s
Operation frequency	2.4 GHz to 2.485 GHz
Communication	
Bluetooth	Tx Output Power: 0 dBm (Bluetooth® v2.0, v2.1) and 4.7 dBm (Bluetooth® Smart) Rx Sensitivity: -82 dBm (Bluetooth® v2.0, v2.1) v4.0 low energy and v2.0, v2.1 wireless technologies
USB	USB 2.0
System requirements	
Operating system	RM Shell 5 and newer Based on Microsoft® Windows 10 IoT Enterprise LTSC 2019
Ambient conditions	
Operating temperature	-30 ... 85 °C (-22 ... 185 °F)
Data for application in connection with hazardous areas	
Certificate	Certified for use in the VisuNet FLX System in ATEX and IECEx Zone 2/22 installations
International approvals	
Approved for	CE, FCC, RoHS, REACH and WEEE
General information	
Supplementary information	Observe the certificates, declarations of conformity, instruction manuals, and manuals where applicable. For information see www.pepperl-fuchs.com . An additional driver is required. Please refer to the software tool tab to install your specific driver.

Release date: 2024-03-28 Date of issue: 2024-03-28 Filename: 70130677_eng.pdf

Refer to "General Notes Relating to Pepperl+Fuchs Product Information".

Pepperl+Fuchs Group
www.pepperl-fuchs.com

USA: +1 330 486 0002
pa-info@us.pepperl-fuchs.com

Germany: +49 621 776 2222
pa-info@de.pepperl-fuchs.com

Singapore: +65 6779 9091
pa-info@sg.pepperl-fuchs.com

 PEPPERL+FUCHS