



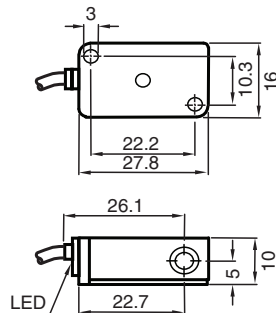
## Inductive sensor

### NCB2-V3-N0

- 2 mm flush
- Usable up to SIL 2 acc. to IEC 61508



## Dimensions



Release date: 2024-04-12 Date of issue: 2024-04-12 Filename: 70133083\_eng.pdf

## Technical Data

### General specifications

|                            |       |                      |
|----------------------------|-------|----------------------|
| Switching function         |       | Normally closed (NC) |
| Output type                |       | NAMUR                |
| Rated operating distance   | $s_n$ | 2 mm                 |
| Installation               |       | flush                |
| Assured operating distance | $s_a$ | 0 ... 1.62 mm        |
| Reduction factor $r_{AI}$  |       | 0.3                  |

Refer to "General Notes Relating to Pepperl+Fuchs Product Information".

Pepperl+Fuchs Group  
www.pepperl-fuchs.com

USA: +1 330 486 0001  
fa-info@us.pepperl-fuchs.com

Germany: +49 621 776 1111  
fa-info@de.pepperl-fuchs.com

Singapore: +65 6779 9091  
fa-info@sg.pepperl-fuchs.com

PEPPERL+FUCHS

## Technical Data

|                                                 |       |                                                                                             |
|-------------------------------------------------|-------|---------------------------------------------------------------------------------------------|
| Reduction factor $r_{Cu}$                       |       | 0.2                                                                                         |
| Reduction factor $r_{304}$                      |       | 0.7                                                                                         |
| Output type                                     |       | 2-wire                                                                                      |
| <b>Nominal ratings</b>                          |       |                                                                                             |
| Nominal voltage                                 | $U_o$ | 8.2 V ( $R_i$ approx. 1 k $\Omega$ )                                                        |
| Switching frequency                             | $f$   | 0 ... 2000 Hz                                                                               |
| Hysteresis                                      | $H$   | typ. 3 %                                                                                    |
| Current consumption                             |       |                                                                                             |
| Measuring plate not detected                    |       | $\geq 3$ mA                                                                                 |
| Measuring plate detected                        |       | $\leq 1$ mA                                                                                 |
| Switching state indicator                       |       | LED, yellow                                                                                 |
| <b>Functional safety related parameters</b>     |       |                                                                                             |
| Safety Integrity Level (SIL)                    |       | SIL 2                                                                                       |
| MTTF <sub>d</sub>                               |       | 2180 a                                                                                      |
| Mission Time ( $T_M$ )                          |       | 20 a                                                                                        |
| Diagnostic Coverage (DC)                        |       | 0 %                                                                                         |
| <b>Compliance with standards and directives</b> |       |                                                                                             |
| Standard conformity                             |       |                                                                                             |
| NAMUR                                           |       | EN 60947-5-6:2000<br>IEC 60947-5-6:1999                                                     |
| Electromagnetic compatibility                   |       | NE 21:2007                                                                                  |
| Standards                                       |       | EN 60947-5-2:2007<br>EN 60947-5-2/A1:2012<br>IEC 60947-5-2:2007<br>IEC 60947-5-2 AMD 1:2012 |
| <b>Approvals and certificates</b>               |       |                                                                                             |
| IECEX approval                                  |       |                                                                                             |
| Equipment protection level Ga                   |       | IECEX PTB 11.0021X                                                                          |
| Equipment protection level Gb                   |       | IECEX PTB 11.0021X                                                                          |
| Equipment protection level Da                   |       | IECEX PTB 11.0021X                                                                          |
| Equipment protection level Mb                   |       | IECEX PTB 11.0021X                                                                          |
| ATEX approval                                   |       |                                                                                             |
| Equipment protection level Ga                   |       | PTB 00 ATEX 2032 X                                                                          |
| Equipment protection level Gb                   |       | PTB 00 ATEX 2032 X                                                                          |
| Equipment protection level Da                   |       | PTB 00 ATEX 2032 X                                                                          |
| UL approval                                     |       |                                                                                             |
| Ordinary Location                               |       | E87056                                                                                      |
| Hazardous Location                              |       | E501628                                                                                     |
| Control drawing                                 |       | 116-0451                                                                                    |
| CCC approval                                    |       |                                                                                             |
| Hazardous Location                              |       | 2020322315002302                                                                            |
| NEPSI approval                                  |       |                                                                                             |
| NEPSI certificate                               |       | GYJ16.1394X                                                                                 |
| CML approval                                    |       | on request                                                                                  |
| ANZEx                                           |       | 19.3001X                                                                                    |
| <b>Ambient conditions</b>                       |       |                                                                                             |
| Ambient temperature                             |       | -25 ... 100 °C (-13 ... 212 °F)                                                             |
| <b>Mechanical specifications</b>                |       |                                                                                             |
| Connection type                                 |       | cable                                                                                       |
| Housing material                                |       | PBT                                                                                         |
| Sensing face                                    |       | PBT                                                                                         |
| Degree of protection                            |       | IP67                                                                                        |
| Cable                                           |       |                                                                                             |
| Cable diameter                                  |       | 2.6 mm $\pm$ 0.2 mm                                                                         |

Release date: 2024-04-12 Date of issue: 2024-04-12 Filename: 70133083\_eng.pdf

Refer to "General Notes Relating to Pepperl+Fuchs Product Information".

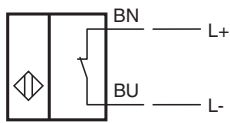
Pepperl+Fuchs Group  
www.pepperl-fuchs.comUSA: +1 330 486 0001  
fa-info@us.pepperl-fuchs.comGermany: +49 621 776 1111  
fa-info@de.pepperl-fuchs.comSingapore: +65 6779 9091  
fa-info@sg.pepperl-fuchs.com

**PEPPERL+FUCHS**

**Technical Data**

|                                     |   |                         |
|-------------------------------------|---|-------------------------|
| Bending radius                      |   | > 10 x cable diameter   |
| Material                            |   | PVC                     |
| Core cross section                  |   | 0.14 mm <sup>2</sup>    |
| Length                              | L | 130 mm                  |
| Tightening torque, fastening screws |   | ≤ 0.4 Nm                |
| Dimensions                          |   |                         |
| Height                              |   | 10.2 mm                 |
| Width                               |   | 27.8 mm                 |
| Length                              |   | 16 mm                   |
| <b>General information</b>          |   |                         |
| Use in the hazardous area           |   | see instruction manuals |

**Connection**



Release date: 2024-04-12 Date of issue: 2024-04-12 Filename: 70133083\_eng.pdf