



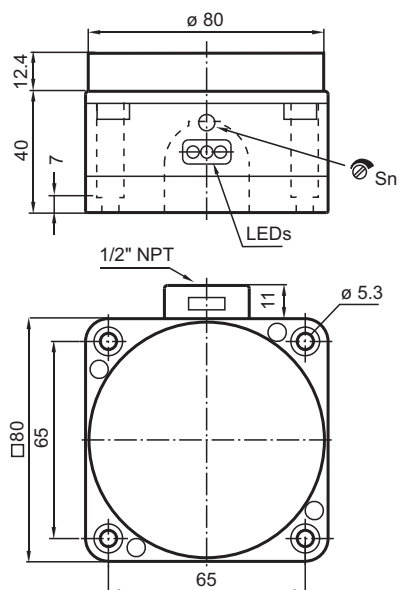
Inductive sensor

NJ60-FP-E2-P2

- 3-wire DC
- Surface mount
- Sensing range 60 mm
- Operating distance adjustable via potentiometer



Dimensions



Technical Data

General specifications

| | | |
|----------------------------|-------|--------------------|
| Switching function | | Normally open (NO) |
| Output type | | PNP |
| Rated operating distance | S_n | 60 mm |
| Installation | | non-flush |
| Output polarity | | DC |
| Assured operating distance | S_a | 0 ... 48.6 mm |

Release date: 2024-05-27 Date of issue: 2024-05-27 Filename: 70147100_eng.pdf

Refer to "General Notes Relating to Pepperl+Fuchs Product Information".

Pepperl+Fuchs Group
www.pepperl-fuchs.com

USA: +1 330 486 0001
fa-info@us.pepperl-fuchs.com

Germany: +49 621 776 1111
fa-info@de.pepperl-fuchs.com

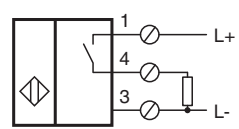
Singapore: +65 6779 9091
fa-info@sg.pepperl-fuchs.com

PEPPERL+FUCHS

Technical Data

| | | |
|---|-------|--------------------------------|
| Reduction factor r_{Al} | | 0.4 |
| Reduction factor r_{Cu} | | 0.3 |
| Reduction factor r_{304} | | 0.85 |
| Output type | | 3-wire |
| Adjustment aid | | LED, green/red |
| Nominal ratings | | |
| Operating voltage | U_B | 10 ... 30 V |
| Switching frequency | f | 8 Hz |
| Hysteresis | H | typ. 3 % |
| Reverse polarity protection | | reverse polarity protected |
| Short-circuit protection | | pulsing |
| Voltage drop | U_d | ≤ 3 V |
| Operating current | I_L | 0 ... 200 mA |
| No-load supply current | I_0 | ≤ 20 mA |
| Time delay before availability | t_v | ≤ 20 ms |
| Operating voltage indicator | | LED, green |
| Switching state indicator | | LED, red |
| Compliance with standards and directives | | |
| Standard conformity | | |
| Standards | | EN IEC 60947-5-2 |
| Approvals and certificates | | |
| UL approval | | cULus Listed, General Purpose |
| CSA approval | | cCSAus Listed, General Purpose |
| Ambient conditions | | |
| Ambient temperature | | 0 ... 60 °C (32 ... 140 °F) |
| Mechanical specifications | | |
| Connection type | | screw terminals |
| Core cross section | | up to 2.5 mm ² |
| Housing material | | POM |
| Sensing face | | POM |
| Degree of protection | | IP65 |
| Dimensions | | |
| Height | | 40 mm |
| Width | | 80 mm |
| Length | | 80 mm |

Connection



Release date: 2024-05-27 Date of issue: 2024-05-27 Filename: 70147100_eng.pdf

Mounting

Installation

The sensor should be mounted at least 30 mm above the conveyor chain. This ensures, that the sensor will not be influenced by the conveyor chain.

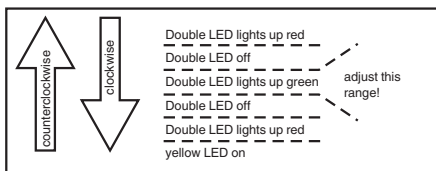
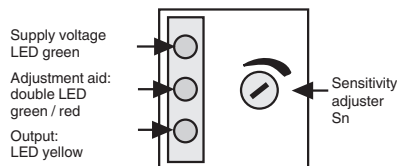
Adjustment:

For correct operation, the sensor has to be adjusted according to the application.

The adjustment has to be carried out without the object, which has to be detected.

- 1) Supply the sensor (10 ... 30 V DC).
leuchtet die grüne LED.
- 2) If the output is activated,
the yellow LED is on
- 3) The adjustment is made without
measuring body

The double LED in the middle has to light up green. If it doesn't, turn the sensitivity adjuster clockwise until the LED lights up yellow. Now turn the sensitivity adjuster counterclockwise until the double LED lights up green.



Function check:

To check the correct adjustment, test the reliable detection of a stainless steel test tube in the bottle.