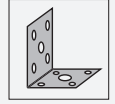
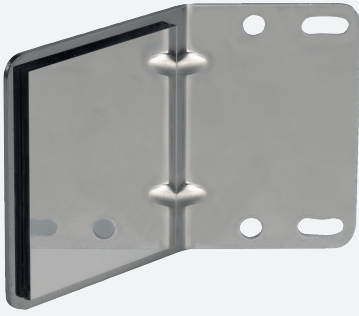


Accessory photo

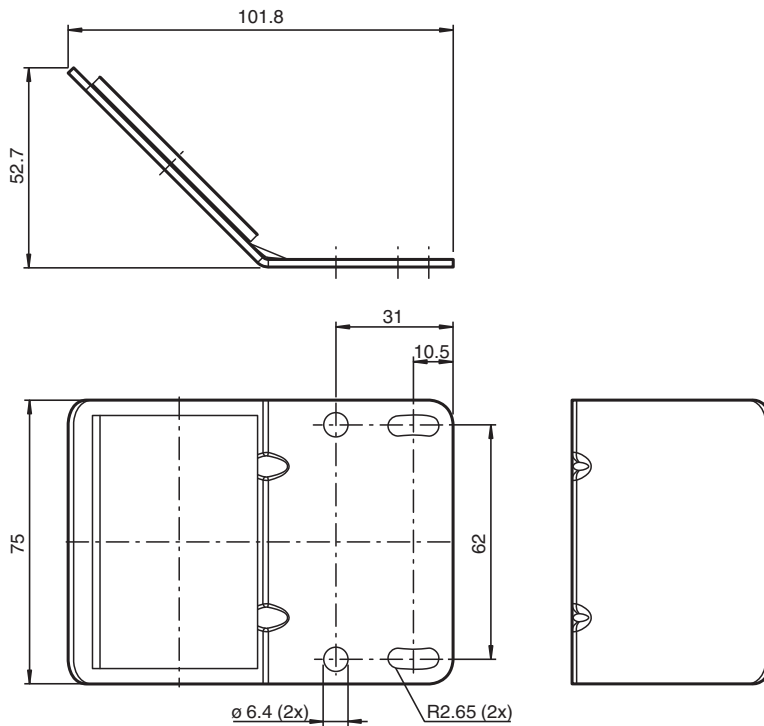
OMH-R1000-03



- Simple and fast mounting
- 90° beam deflection
- Can be combined with adjustment device

Deviation mirror

Dimensions



Technical Data

Nominal ratings

Repeat accuracy R The repeating accuracy of the device used does not change.

Measurement accuracy

Accuracy ± 1 mm (This fault is added to the fault in the device used)

Mechanical specifications

Material high-grade steel,
deflector mirror: glass

Mass approx. 165 g

Mounting sensor Mounting accessories included

Suitable series

Release date: 2023-08-02 Date of issue: 2023-08-02 Filename: 70160709_eng.pdf

Refer to "General Notes Relating to Pepperl+Fuchs Product Information".

Pepperl+Fuchs Group
www.pepperl-fuchs.com

USA: +1 330 486 0001
fa-info@us.pepperl-fuchs.com

Germany: +49 621 776 1111
fa-info@de.pepperl-fuchs.com

Singapore: +65 6779 9091
fa-info@sg.pepperl-fuchs.com

PF PEPPERL+FUCHS

Technical Data

Series	R1000
--------	-------

Release date: 2023-08-02 Date of issue: 2023-08-02 Filename: 70160709_eng.pdf

Refer to "General Notes Relating to Pepperl+Fuchs Product Information".

Pepperl+Fuchs Group
www.pepperl-fuchs.com

USA: +1 330 486 0001
fa-info@us.pepperl-fuchs.com

Germany: +49 621 776 1111
fa-info@de.pepperl-fuchs.com

Singapore: +65 6779 9091
fa-info@sg.pepperl-fuchs.com