



Technical data

General specifications

Detection range		SU18: 220 mm SU18/35: 920 mm SU19: 220 mm
Fiber optic length	l	2000 mm , adjustable
Fiber optic diameter	d	2.2 mm
Adapter form		00
End piece		thread
Bending radius		min. 25 mm
Fiber configuration	Fv	see dimensions
Angle of divergence		67 °
Accessories provided		Cutter for plastic fiber optics

Ambient conditions

Ambient temperature		-55 ... 70 °C (-67 ... 158 °F)
---------------------	--	--------------------------------

Mechanical specifications

Material		
Optical face		plastic
Sheathing		PVC
Core		plastic
End piece		Stainless steel 1.4305 / AISI 303

General information

Scope of delivery		Fiber optic cables packaged in pairs
-------------------	--	--------------------------------------

Model Number

KLE-C01-2,2-2,0-K100

Plastic fiber optic - thru-beam

Features

- Thread M6

Series

Fiber optic amplifiers

Device series	SU18 ; SU18/35 ; SU19 ; ML17-LL
---------------	------------------------------------

Description

Attention:

Fiber optics must not be twisted or kinked. Excessive tensile loads will lead to destruction. Contact with petrol or organic solvents must be prevented.



Accessories

OMH-LL-M6

Mounting bracket for fiber optic cable, M6 thread

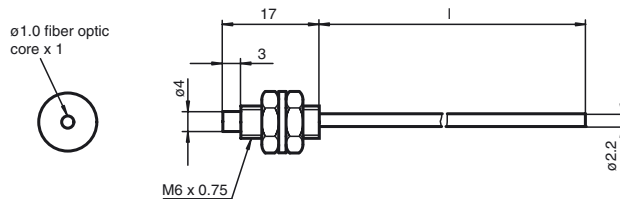
KM6-0,5

Metal protection for plastic fiber optics M6 x 0.5 m

KM6-1,0

Metal protection for plastic fiber optics M6 x 1.0 m

Dimensions



Release date: 2014-07-09 15:34 Date of issue: 2014-07-09 805638_eng.xml