



**Model Number**

**KLE-C01-2,2-2,0-K115**

Plastic fiber optic - thru-beam

**Features**

- Thread M6
- High detection ranges achievable

**Series**

**Fiber optic amplifiers**

Device series SU18 ; SU18/35 ; SU19 ; ML17-LL

**Description**

**Attention:**

Fiber optics must not be twisted or kinked. Excessive tensile loads will lead to destruction. Contact with petrol or organic solvents must be prevented.



**Accessories**

**KM6-0,5**

Metal protection for plastic fiber optics M6 x 0.5 m

**KM6-1,0**

Metal protection for plastic fiber optics M6 x 1.0 m

**Technical data**

**General specifications**

Detection range		SU18: 450 mm SU18/35: 1500 mm SU19: 450 mm
Fiber optic length	l	2000 mm , adjustable
Fiber optic diameter	d	2.2 mm
Adapter form		00
End piece		thread
Bending radius		min. 40 mm
Fiber configuration	Fv	see dimensions
Angle of divergence		67 °
Accessories provided		Cutter for plastic fiber optics

**Ambient conditions**

Ambient temperature		-55 ... 70 °C (-67 ... 158 °F)
---------------------	--	--------------------------------

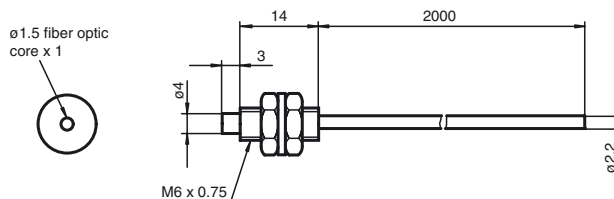
**Mechanical specifications**

<b>Material</b>		
Optical face		plastic
Sheathing		PVC
Core		plastic
End piece		Stainless steel 1.4305 / AISI 303

**General information**

Scope of delivery		Fiber optic cables packaged in pairs
-------------------	--	--------------------------------------

**Dimensions**



Release date: 2014-07-09 15:35 Date of issue: 2014-07-09 805871\_eng.xml