



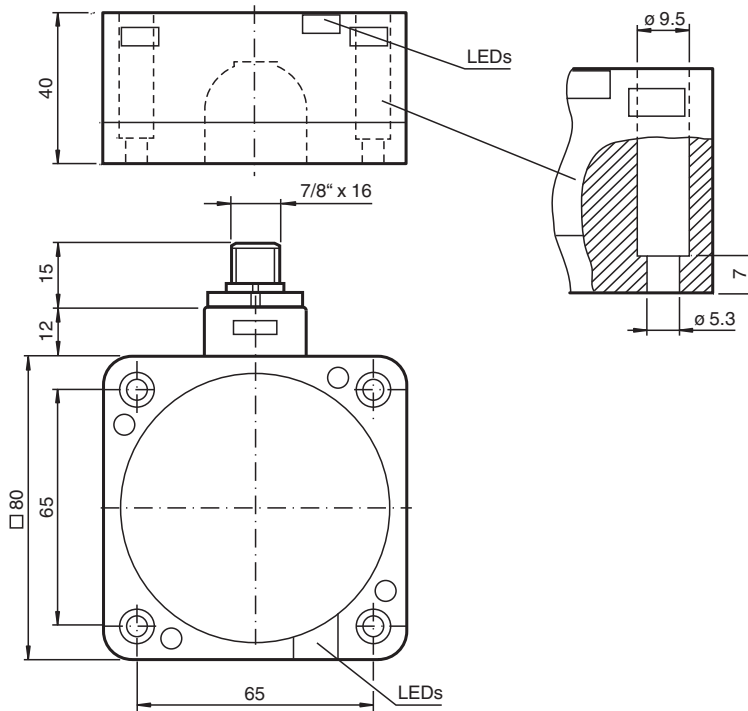
Inductive sensor

NCB40-FP-W-P4-BHMS3-N.O.

- 40 mm flush
- 2-wire AC



Dimensions



Technical Data

General specifications

| | | |
|----------------------------|-------|---------------|
| Rated operating distance | s_n | 40 mm |
| Installation | | flush |
| Output polarity | | AC |
| Assured operating distance | s_a | 0 ... 32.4 mm |
| Reduction factor r_{Al} | | 0.25 |
| Reduction factor r_{Cu} | | 0.23 |
| Reduction factor r_{304} | | 0.85 |
| Output type | | 2-wire |

Nominal ratings

Release date: 2022-06-22 Date of issue: 2022-06-22 Filename: 908487_eng.pdf

Refer to "General Notes Relating to Pepperl+Fuchs Product Information".

Pepperl+Fuchs Group
www.pepperl-fuchs.com

USA: +1 330 486 0001
fa-info@us.pepperl-fuchs.com

Germany: +49 621 776 1111
fa-info@de.pepperl-fuchs.com

Singapore: +65 6779 9091
fa-info@sg.pepperl-fuchs.com

PF PEPPERL+FUCHS

Technical Data

| | | |
|-----------------------------------|-------|--------------------------|
| Operating voltage AC | U_B | 20 ... 253 V |
| Switching frequency | f | 0 ... 20 Hz |
| Hysteresis | H | 3 ... 15 % 5 % typical |
| Short-circuit protection | | no |
| Voltage drop | U_d | ≤ 5 V typ. 4V |
| Momentary current (20 ms, 0.1 Hz) | | max. 4000 mA |
| Operating current | I_L | 5 ... 500 mA |
| Off-state current | I_r | 0.3 ... 1 mA typ. 0.7 mA |
| Time delay before availability | t_v | ≤ 100 ms |
| Operating voltage indicator | | LED, green |
| Switching state indicator | | LED, yellow |

Compliance with standards and directives

| | | |
|---------------------|--|---|
| Standard conformity | | |
| Standards | | EN 60947-5-2:2007 EN 60947-5-2/A1:2012 IEC 60947-5-2:2007 IEC 60947-5-2 AMD 1:2012 |

Approvals and certificates

| | | |
|--------------|--|---|
| UL approval | | cULus Listed, General Purpose |
| CSA approval | | cCSAus Listed, General Purpose |
| CCC approval | | Certified by China Compulsory Certification (CCC) |

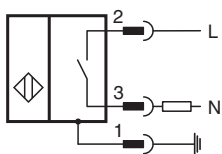
Ambient conditions

| | | |
|---------------------|--|--------------------------------|
| Ambient temperature | | -25 ... 70 °C (-13 ... 158 °F) |
|---------------------|--|--------------------------------|

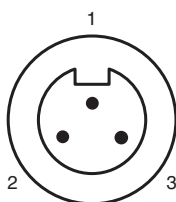
Mechanical specifications

| | | |
|----------------------|--|---|
| Connection type | | 7/8 inch-16 UN , 3-pin connector |
| Housing material | | PBT/base of metal |
| Sensing face | | PBT |
| Housing base | | metal |
| Degree of protection | | IP68 |
| Note | | 1) In the temperature range below 0 °C, permissible operating voltage U_b 80...253 V Safety fuse ≤ 2 A (quick-blow) according to IEC 60127-2 Sheet 1 Recommendation: after a short circuit, check that the device is functioning correctly. |

Connection



Connection Assignment



Release date: 2022-06-22 Date of issue: 2022-06-22 Filename: 908487_eng.pdf

Connection Assignment

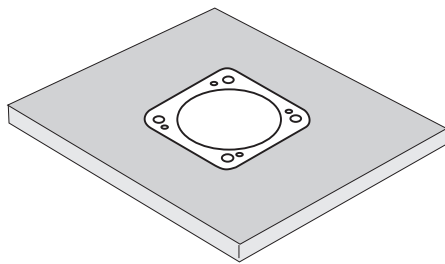
Wire colors

| | | |
|---|----|---------|
| 1 | GN | (green) |
| 2 | BK | (black) |
| 3 | WH | (white) |

Additional Information




These sensors are especially designed for embeddable mounting in conveyor floors. Due to its precise location in metal base plates the sensor is afforded a high degree of mechanical protection. No clearance is required between the sensor and the base plate, avoiding the need for protective guarding to prevent possible foot injury.

The large sensing range ensures positive detection, and thus provides consistent control and monitoring of the conveyor.



Accessories

Release date: 2022-06-22 Date of issue: 2022-06-22 Filename: 908487_eng.pdf

| | | |
|---|-------------------------|--|
|  | V93-G-YE2M-STOOW | Female cordset, 7/8", 3-pin, STOOW cable |
|  | V93-G-YE4M-STOOW | Female cordset, 7/8", 3-pin, STOOW cable |
|  | V93-G-YE6M-STOOW | Female cordset, 7/8", 3-pin, STOOW cable |