

RFIDControl

RFIDControl



- Visualization and Evaluation Software on the PC

Software for RFID identification systems

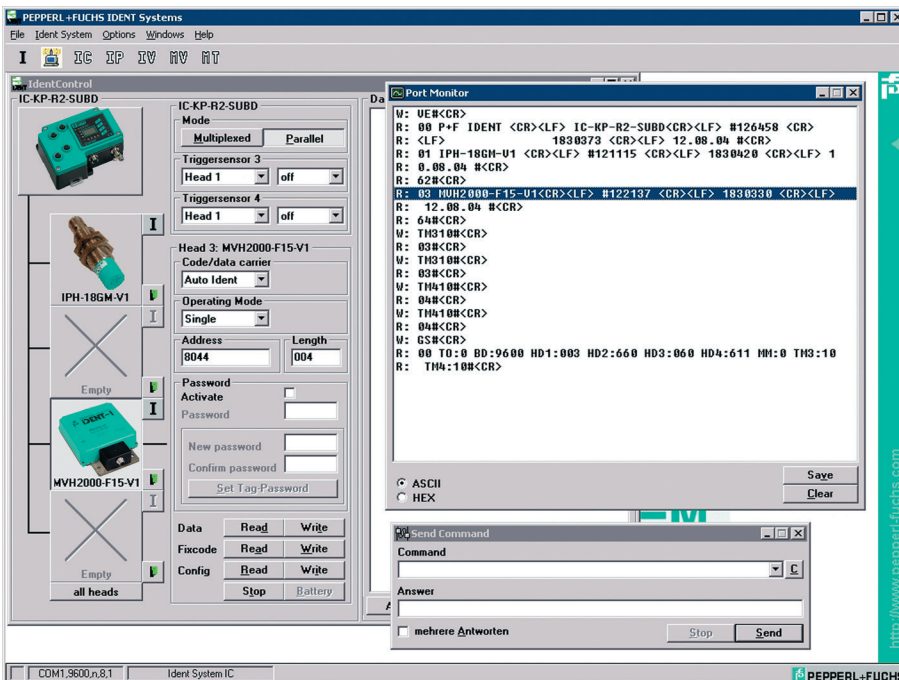
Technical Data

General specifications

Description

The program enables you to input and execute all essential commands via a command window. The interface monitor logs the entire communication. This program runs in Windows XP/7 and has extensive online help. Installation is straightforward and the connected identification system is automatically detected. All essential commands can be entered via the command window and processed by means of this program.

Assembly



Release date: 2020-03-24 Date of issue: 2020-03-27 Filename: t170442_eng.pdf

Refer to "General Notes Relating to Pepperl+Fuchs Product Information".

Pepperl+Fuchs Group
www.pepperl-fuchs.com

USA: +1 330 486 0001
fa-info@us.pepperl-fuchs.com

Germany: +49 621 776 1111
fa-info@de.pepperl-fuchs.com

Singapore: +65 6779 9091
fa-info@sg.pepperl-fuchs.com

PEPPERL+FUCHS