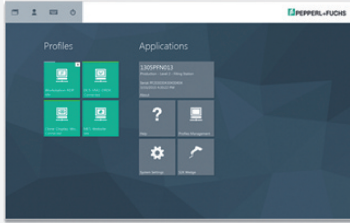


VisuNet RM Shell

VISUNET-RM-SHELL4



- Innovative firmware to support easy integration and management of remote monitors and thin clients
- Support for remote protocols like Microsoft RDP 8, RealVNC, Citrix Receiver, DRDC, and many others
- Developed within the Microsoft® Windows Embedded Standard 7 framework
- Microsoft Enhanced Write Filter, firewall, and USB lock-down for highest system security
- Auto connect to host systems after RM startup
- Connection loss detection and backup connections for highest reliability
- Simultaneous start of multiple remote connections




Function

Pepperl+Fuchs VisuNet Remote Monitors (VisuNet RMs) are industrialgrade thin client solutions that give operators a simplified, modern user interface. VisuNet RM Shell 5 firmware enables users to easily access the applications that run on a process control systems via Ethernet. With this basic version of the VisuNet RM Shell, all standard features of the software are available. Optional license keys offer extended features.

Technical Data

Software	
Operating system	based on Microsoft Windows Embedded Standard 7
Languages	English
Licensing	Standard version of the RM Shell 4.x is included with every new P+F VisuNet Remote Monitor. To enable additional features, check the additional license options available for the RM Shell 4.x.
Available licenses	PRO license key , Emerson DRDC license key
Installation	Pre-installed on P+F VisuNet Remote Monitor (depending on product variant).
Associated products	VisuNet Remote Monitors with pre-installed RM Shell 4.x

Accessories

	VISUNET-RM-SHELL4-DRDC	
	VISUNET-RM-SHELL4-PRO	
	VISUNET-RM-SHELL4-CC	

Release date: 2020-12-15 Date of issue: 2020-12-15 Filename: t177534_eng.pdf

Refer to "General Notes Relating to Pepperl+Fuchs Product Information".