



# Incremental rotary encoder RHI90N

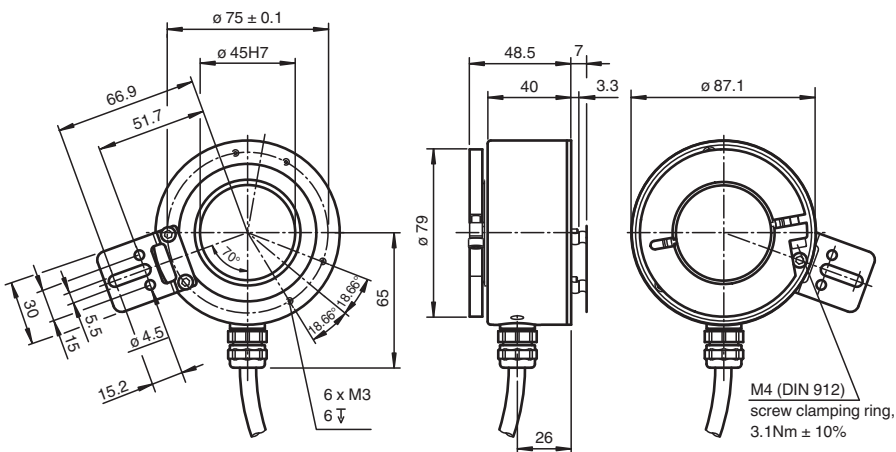
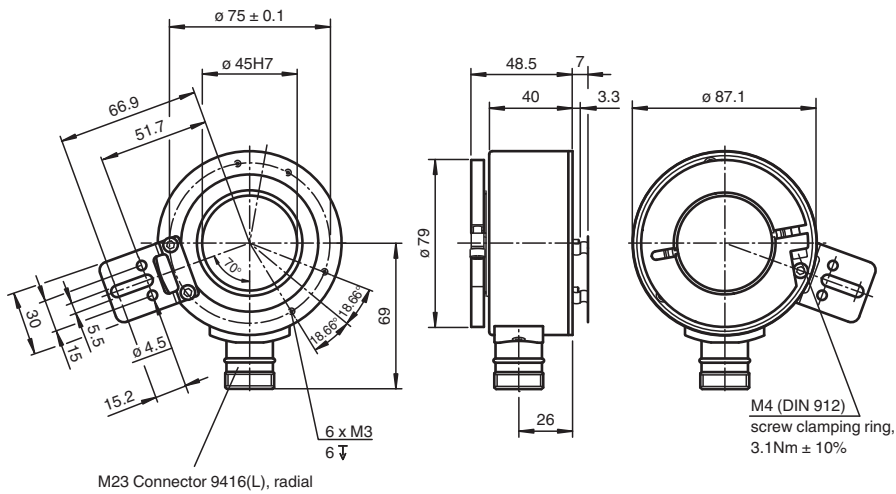
- Compact design housing  $\varnothing 90$  mm
- Hollow shaft  $\varnothing 45$  mm
- Easy shaft clamping
- High resolution and accuracy



## Function

The incremental hollow shaft encoder is available with 45 mm shaft diameter. The compact and highly accurate encoder combines the advantages of modern technics and cost effective design. Thanks to its comparatively small outside diameter the encoder can also be used if only little mounting space is available. The shaft fastening is designed in a way that the shaft of the customer is not being damaged. The shaft fastening is designed in a way that the shaft of the customer is not being damaged.

## Dimensions



Release date: 2025-04-11 Date of issue: 2025-04-11 Filename: t179164\_eng.pdf

Refer to "General Notes Relating to Pepperl+Fuchs Product Information".

Pepperl+Fuchs Group  
www.pepperl-fuchs.com

USA: +1 330 486 0001  
fa-info@us.pepperl-fuchs.com

Germany: +49 621 776 1111  
fa-info@de.pepperl-fuchs.com

Singapore: +65 6779 9091  
fa-info@sg.pepperl-fuchs.com

**PF** PEPPERL+FUCHS

## Technical Data

General specifications			
Detection type			photoelectric sampling
Pulse count			max. 2500
Functional safety related parameters			
MTTF <sub>d</sub>			140 a
L <sub>10</sub>			50 E+9 at 1750 rpm
Diagnostic Coverage (DC)			0 %
Electrical specifications			
Operating voltage	U <sub>B</sub>		10 ... 30 V DC or 5 V DC ± 5 % (see "Output circuit" in the ordering information)
No-load supply current	I <sub>0</sub>		max. 70 mA
Output			
Output type			push-pull, incremental or RS-422, incremental (see "Output circuit" in the ordering information)
Voltage drop	U <sub>d</sub>		< 2.5 V (push-pull, incremental)
Load current			max. per channel 40 mA , short-circuit protected, reverse polarity protected (push-pull, incremental) max. per channel 20 mA , short-circuit protected, reverse polarity protected (RS 422, incremental)
Output frequency			max. 200 kHz
Rise time			600 ns
De-energized delay	t <sub>off</sub>		600 ns
Connection			
Connector			type 9416 (M23), 12-pin, type 9416L (M23), 12-pin
Cable			Ø6.5 mm, 4 x 2 x 0.14 mm <sup>2</sup> , 1 m
Standard conformity			
Degree of protection			DIN EN 60529, IP65
Climatic testing			DIN EN 60068-2-78
Emitted interference			EN IEC 61000-6-4:2019
Noise immunity			EN IEC 61000-6-2:2019
Shock resistance			DIN EN 60068-2-27, 100 g, 6 ms
Vibration resistance			DIN EN 60068-2-6, 10 g, 10 ... 2000 Hz
Approvals and certificates			
UL approval			E223176 , cULus Listed, General Purpose, Class 2 Power Source
Maximum permissible ambient temperature			max. 60 °C (max. 140 °F)
Ambient conditions			
Operating temperature			-5 ... 70 °C (23 ... 158 °F) , cable, movable installation -20 ... 70 °C (-4 ... 158 °F), cable, fixed installation
Storage temperature			-40 ... 80 °C (-40 ... 176 °F)
Mechanical specifications			
Material			
Housing			aluminum, blank
Flange			3.1645 aluminum
Shaft			Stainless steel 1.4305 / AISI 303
Mass			approx. 900 g
Rotational speed			max. 3500 min <sup>-1</sup>
Starting torque			≤ 18 Ncm
Shaft load			
Angle offset			1 °
Axial offset			max. 1 mm
Dimensions			
Length			48.5 mm
Diameter			87.1 mm

Release date: 2025-04-11 Date of issue: 2025-04-11 Filename: t179164\_eng.pdf

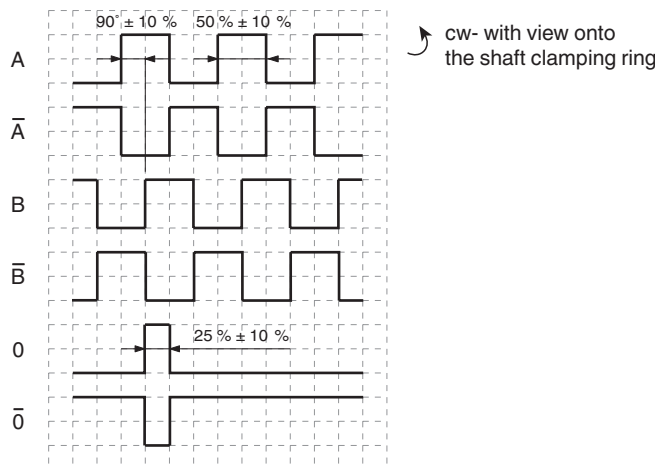
Refer to "General Notes Relating to Pepperl+Fuchs Product Information".

Pepperl+Fuchs Group  
www.pepperl-fuchs.comUSA: +1 330 486 0001  
fa-info@us.pepperl-fuchs.comGermany: +49 621 776 1111  
fa-info@de.pepperl-fuchs.comSingapore: +65 6779 9091  
fa-info@sg.pepperl-fuchs.com

**PEPPERL+FUCHS**

## Operation

### Signal outputs



## Type Code

### Structure of the type code

R	H	I	9	0	N	-	0	N	A	(1)	(1)	R	6	(2)	N	-	(3)	(3)	(3)	(3)	(3)
---	---	---	---	---	---	---	---	---	---	-----	-----	---	---	-----	---	---	-----	-----	-----	-----	-----

<b>RHI</b>	<b>Device type</b>
RHI	Incremental rotary encoder with hollow shaft
<b>90</b>	<b>Size</b>
90	Housing diameter 90 mm
<b>N</b>	<b>Housing material</b>
N	Aluminum, uncoated
<b>0N</b>	<b>Shaft dimension</b>
0N	Hollow shaft Ø 45 mm
<b>A</b>	<b>Flange version</b>
A	Hollow shaft
<b>(1) (1)</b>	<b>Connection</b>
AA	M23 device plug, 12-pin, cw (type 9416)
AB	M23 device plug, 12-pin, ccw (type 9416L)
K1	Cable Ø 6.5 mm, 4 x 2 x 0.14 mm <sup>2</sup> , 1 m
<b>R</b>	<b>Connection alignment</b>
R	Radial
<b>6</b>	<b>Signal output</b>
6	A + B + 0 and A + B + 0 und /A + /B + /0
<b>(2)</b>	<b>Output switching</b>
1	10 V ... 30 V, push-pull)
6	5 V, RS422
X	10 V ... 30 V, RS 422
<b>N</b>	<b>Option</b>
N	Normal
<b>(3) (3) (3) (3) (3)</b>	<b>Pulse count</b>
00100	100 pulses
00125	125 pulses
00360	360 pulses
00500	500 pulses
00512	512 pulses
01000	1000 pulses
01024	1024 pulses
02048	2048 pulses
02500	2500 pulses

Release date: 2025-04-11 Date of issue: 2025-04-11 Filename: t179164\_eng.pdf

**Connection**

Signal	Cable Ø6.5 mm, 8-core	Connector 9416, 12-pin	Connector 9416L, 12-pin
GND	White	10	10
U <sub>b</sub>	Brown	12	12
A	Green	5	5
B	Grey	8	8
$\bar{A}$	Yellow	6	6
$\bar{B}$	Pink	1	1
0	Blue	3	3
$\bar{0}$	Red	4	4
Shield	-	Housing	Housing
NC	-	2, 7, 9, 11	2, 7, 9, 11

Release date: 2025-04-11 Date of issue: 2025-04-11 Filename: t179164\_eng.pdf

Refer to "General Notes Relating to Pepperl+Fuchs Product Information".

Pepperl+Fuchs Group  
www.pepperl-fuchs.com

USA: +1 330 486 0001  
fa-info@us.pepperl-fuchs.com

Germany: +49 621 776 1111  
fa-info@de.pepperl-fuchs.com

Singapore: +65 6779 9091  
fa-info@sg.pepperl-fuchs.com