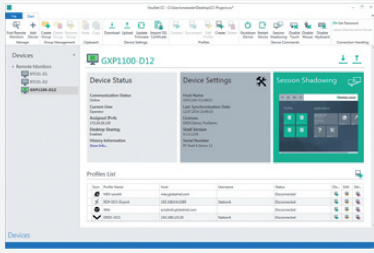


# Thin Client Firmware VisuNet Control Center 4



- User-friendly, centralized management tool
- Remotely configure (e.g., IP address) Remote Monitors
- Create and edit remote profiles (e.g. a RDP connection profile) on a Remote Monitor
- Copy profiles from one Remote Monitor to another Remote Monitor
- Monitor the operators screen and support them remotely via "session shadowing"

Additional Management tool for VisuNet Remote Monitors and Box Thin Clients

## Function

The VisuNet Control Center (VisuNet CC) is a software tool for the centralized management of Pepperl+Fuchs VisuNet Remote Monitors. The software can be installed on any Windows-based PC (e.g. a PC in the control room). This allows remotely setup, managing and maintaining all Remote Monitors that are connected to the same network infrastructure.

## Technical Data

### Software

Operating system	Requires Microsoft Windows operating system (min. Windows 7 or higher) and Microsoft .NET Framework v. 4.5.2. Compatible with Pepperl+Fuchs Remote Monitors with RM Shell 4.1 or RM Shell 5 (or higher).
Languages	English
Licensing	Requires VisuNet Control Center License entered on every Pepperl+Fuchs Remote Monitor that should be managed with the Control Center
Available licenses	CC license key
Installation	Download installer and install Software on any Windows-based Desktop PC that is connected to the same network as the VisuNet Remote Monitors
Associated products	VisuNet Remote Monitors with pre-installed RM Shell 4.1 or pre-installed RM Shell 5 License key VISUNET-RM-SHELL4-CC or VISUNET-RM-SHELL-5-CC