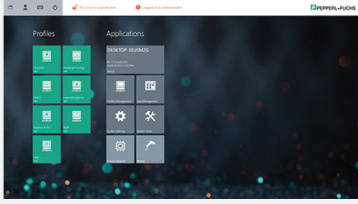


Thin Client Firmware

VisuNet RM Shell 5 (2016 LTSB)



- Innovative firmware to support easy integration and management of remote monitors and thin clients
- Supports installation of third-party applications, such as Citrix Receiver and Java Runtime
- Based on Microsoft® Windows 10 IoT Enterprise LTSP 2016
- Microsoft Universal Write Filter, firewall, USB lock-down, and virus scanner support for maximum system security
- Auto connect to host systems after RM startup
- Connection loss detection and backup connections for highest reliability
- Simultaneous start of multiple remote connections

Thin Client Firmware for VisuNet Remote Monitors and Box Thin Clients

Function

Pepperl+Fuchs VisuNet Remote Monitors (VisuNet RMs) and Box Thin Clients are industrialgrade thin client solutions that give operators a simplified, modern user interface. VisuNet RM Shell 5 firmware enables users to easily access the applications that run on a process control systems via Ethernet.




With this basic version of the VisuNet RM Shell, all standard features of the software are available. Optional license keys offer extended features.

Technical Data

Software

Operating system	Based on Microsoft® Windows 10 IoT Enterprise 2016 LTSP
Languages	English
Licensing	Standard version of the RM Shell 5 is included with every new VisuNet Remote Monitor. To enable additional features, check the additional license options available for RM Shell 5.
Available licenses	PRO license key, Emerson DRDC license key, VisuNet CC license key
Installation	Pre-installed on VisuNet Remote Monitor and Box Thin Client (depending on product variant).
Associated products	VisuNet Remote Monitors with pre-installed RM Shell 5

Accessories

	VISUNET-RM-SHELL5-CC	VisuNet Control Center License Key for RM Shell 5
	VISUNET-RM-SHELL5-DRDC	DRDC License Key for RM Shell 5
	VISUNET-RM-SHELL5-PRO	PRO License Key for RM Shell 5

Release date: 2023-07-11 Date of issue: 2023-07-11 Filename: t1188720_eng.pdf

Refer to "General Notes Relating to Pepperl+Fuchs Product Information".

Pepperl+Fuchs Group
www.pepperl-fuchs.com

USA: +1 330 486 0002
pa-info@us.pepperl-fuchs.com

Germany: +49 621 776 2222
pa-info@de.pepperl-fuchs.com

Singapore: +65 6779 9091
pa-info@sg.pepperl-fuchs.com