



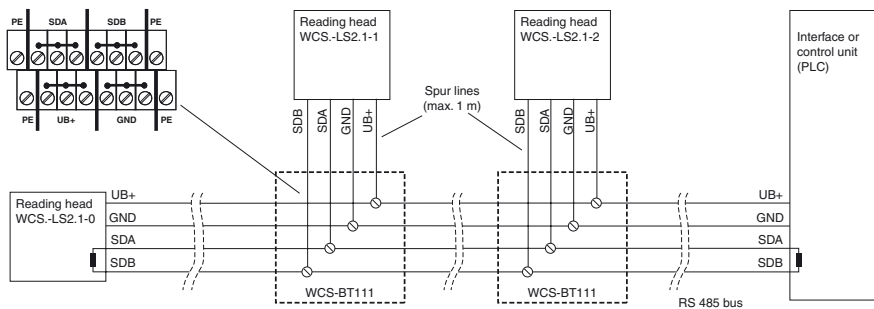
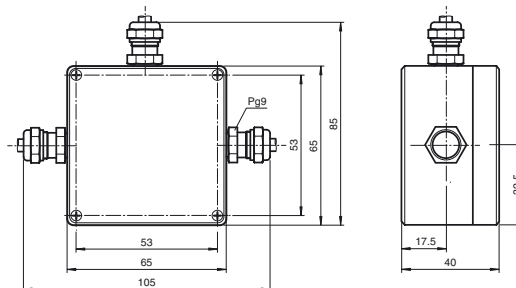
Model number

WCS-BT111
WCS Bus terminal

Features

- Compact terminal housing
- For the connection of a reading head via spur line
- Optimal connection of data wires and shield

Dimensions



Technical data

Ambient conditions

Operating temperature	-40 ... 70 °C (-40 ... 158 °F)
Relative humidity	90 % at 20 °C (68 °F) DIN EN 60068-2-3, no moisture condensation

Mechanical specifications

Connection type	screw terminals , 16-pin
Cable diameter	5 ... 9 mm
Cable gland	PG9 cable gland
Degree of protection	IP65
Material	Aluminum
Mass	200 g

Release date: 2019-05-13 11:00 Date of issue: 2019-05-13 t31951_eng.xml

Refer to "General Notes Relating to Pepperl+Fuchs Product Information".