



# Diagnostic Manager Software

## DTM-FC.AD\*

- Software user interface for Advanced Diagnostic Modules
- Simultaneous access to all ADMs of a plant
- Embedded expert system gives pointed advice in clear text
- Includes Commissioning Wizard, data historian, oscilloscope...
- For FOUNDATION Fieldbus H1 and PROFIBUS PA
- Automatic setup of diagnostic system



User-Interface for Advanced Diagnostics, Professional Edition



### Function

The FieldConnex® Diagnostic Manager displays measurements of HD2-DM-A Advanced Diagnostic Modules (ADM). It commissions and configures the ADMs and receives data and alarms in realtime. An Expert System learns values and characteristics of each segment and translates them into concise descriptions of causes in clear text. Maintenance or repair work can be scheduled proactively while the plant still operates. The Diagnostic Manager and ADM ensure best possible quality of the physical layer, higher plant availability and reduced troubleshooting effort.

### Assembly



### Technical Data

#### Software

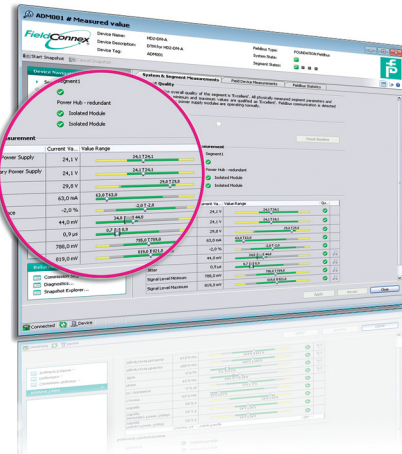
Hardware requirements	PC with 1 GHz processor and at least 512 MByte RAM
Operating system	see release notes in the software package
Languages	English
Licensing	New plant licenses: DTM-FC-AD for production process plants with up to 100 segments DTM-FC-AD.1 for more than 100 segments Upgrade licenses: DTM-FC-AD.UPG upgrade of existing DTM-FC-AD DTM-FC-AD.1.UPG upgrade of existing DTM-FC-AD.1
Expert System	Built-in expert system interprets behavior of each segment based on rules and gives pointed information in clear text. Precisely diagnosis causes and suggests remedies, which are easy to understand.
Physical Layer Diagnostics	Bulk power health, segment voltage and current, unbalance, noise, signal level, signal polarity, jitter
Commissioning Wizard	Generates reports on physical layer and communications data per device or segment. Automates repetitive tasks during commissioning.
Snapshot Explorer	User interface to review the history of Physical Layer Measurement Reports stored.

Release date: 2022-07-04 Date of issue: 2022-07-04 Filename: t33373\_eng.pdf



Refer to "General Notes Relating to Pepperl+Fuchs Product Information".

**Technical Data**

History Data Export	Export of long-term history data to Excel and the file formats comma-separated (CSV) or binary for graphic analysis and diagram creation
Segment Focus Mode	Fast update of detailed measurements for a single segment
Integrated oscilloscope	Displays fieldbus signals in waveform giving greatest detail. To aid troubleshooting activities, even seldom occurring events can be captured using the oscilloscope's many selectable trigger functions.
OPC Server Interface	The open OPC server interface can easily be adapted to any OPC client. It provides as a Data Access Server (Version 2.05) Summarized State information and basic diagnostic data such as the operating status of the diagnostic module and of the segments.
Remote diagnostics	Fieldbus experts and maintenance contractors are enabled to review Physical Layer diagnostics from off-site.



**Accessories**

	<b>PACTware 4.1</b>	FDT Framework
	<b>PACTware 5.0</b>	FDT Framework

Release date: 2022-07-04 Date of issue: 2022-07-04 Filename: t33373\_eng.pdf

Refer to "General Notes Relating to Pepperl+Fuchs Product Information".

Pepperl+Fuchs Group  
www.pepperl-fuchs.com

USA: +1 330 486 0002  
pa-info@us.pepperl-fuchs.com

Germany: +49 621 776 2222  
pa-info@de.pepperl-fuchs.com

Singapore: +65 6779 9091  
pa-info@sg.pepperl-fuchs.com

 **PEPPERL+FUCHS**