



# FieldConnex® DTM Collection

## DTM FieldConnex

- User interface for PROFIBUS components
- Simple access to measurements, diagnostic and configuration data
- Supports any FDT/DTM host



### Function

The FieldConnex® device type manager (DTM) collection provides the user interface and access to all process-relevant data online in real-time. The collection contains DTMs for FieldConnex process interfaces and PROFIBUS gateways. The DTM provides a standard interface for integration into any distributed control system supporting FDT/DTM technology. A DTM enables configuration and diagnostics independently of the control, operating, plant asset management, or engineering system. It provides remote access, thus improving safety for personnel and reducing time and effort for repair and plant upkeep. Early warnings from an instrument via DTM enable proactive plant upkeep only when it is needed and in time for the plant to remain in production. For DTMs regarding advanced diagnostic modules and gateways see separate datasheets.

### Technical Data

#### General specifications

Description

Device type manager for FieldConnex® components: HD2-GTR-4PA, PROFIBUS DP/PA gateway , \*D0-TI-Ex8.PA.\*, temperature multi-input device for PROFIBUS PA , \*D0-MIO-Ex12.PA\*, multi-input/output for PROFIBUS PA , \*D0-TI-Ex8.PA.\* , temperature multi-input device for PROFIBUS PA

#### Software

Hardware requirements

see release notes

Software requirements

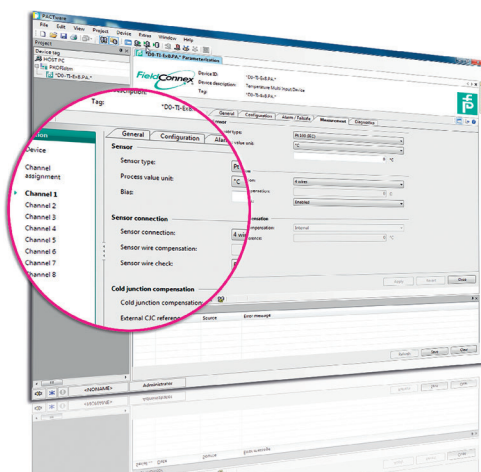
Optional: Unzip tool  
Administrative privileges for the software installation

Operating system

see release notes in the software package

Licensing

Full license included



### Accessories

	<b>PACTware 4.1</b>	<b>FDT Framework</b>
--	---------------------	----------------------

Release date: 2022-07-04 Date of issue: 2022-07-04 Filename: t34040\_eng.pdf

Refer to "General Notes Relating to Pepperl+Fuchs Product Information".

Pepperl+Fuchs Group  
www.pepperl-fuchs.com



USA: +1 330 486 0002  
pa-info@us.pepperl-fuchs.com

Germany: +49 621 776 2222  
pa-info@de.pepperl-fuchs.com

Singapore: +65 6779 9091  
pa-info@sg.pepperl-fuchs.com

**PEPPERL+FUCHS**

## Accessories

 <b>PACTware 3.6</b>	FDT Framework
 <b>PACTware 5.0</b>	FDT Framework

Release date: 2022-07-04 Date of issue: 2022-07-04 Filename: t34040\_eng.pdf

Refer to "General Notes Relating to Pepperl+Fuchs Product Information".

Pepperl+Fuchs Group  
www.pepperl-fuchs.com

USA: +1 330 486 0002  
pa-info@us.pepperl-fuchs.com

Germany: +49 621 776 2222  
pa-info@de.pepperl-fuchs.com

Singapore: +65 6779 9091  
pa-info@sg.pepperl-fuchs.com