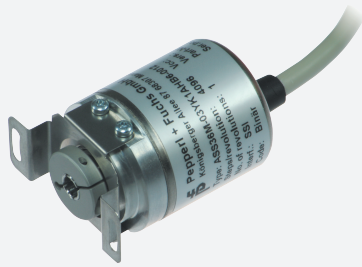


# Singleturn absolute encoder

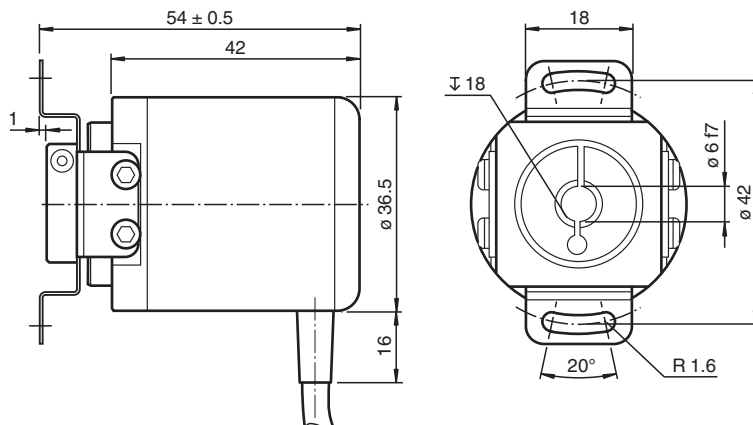
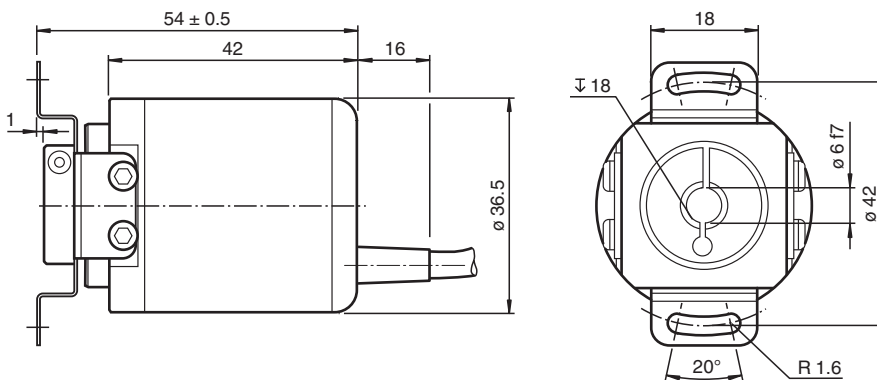
## ASS36M-\*\*\*\*\*



- Very small housing
- High climatic resistance
- Up to 13 Bit singleturn
- SSI interface
- Optically isolated interface
- Surge and reverse polarity protection



### Dimensions



Release date: 2022-04-21 Date of issue: 2022-12-12 Filename: t42540\_eng.pdf

Refer to "General Notes Relating to Pepperl+Fuchs Product Information".

Pepperl+Fuchs Group  
www.pepperl-fuchs.com

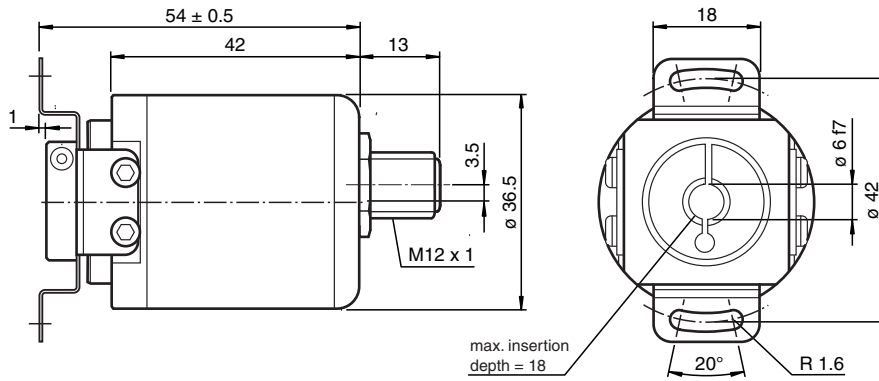
USA: +1 330 486 0001  
fa-info@us.pepperl-fuchs.com

Germany: +49 621 776 1111  
fa-info@de.pepperl-fuchs.com

Singapore: +65 6779 9091  
fa-info@sg.pepperl-fuchs.com

PEPPERL+FUCHS

**Dimensions**



Recessed hollow shaft

**Technical Data**

<b>General specifications</b>	
Detection type	magnetic sampling
Device type	Singleturn absolute encoder
<b>Nominal ratings</b>	
Linearity error	± 0.36 °
<b>Electrical specifications</b>	
Operating voltage	U <sub>B</sub> 4.5 ... 30 V DC
Power consumption	P <sub>0</sub> approx. 2 W
Output code	Gray code, binary code
Code course (counting direction)	adjustable
<b>Interface</b>	
Interface type	SSI
Resolution	
Single turn	up to 13 Bit ( hysteresis: 0.1 ° )
Overall resolution	up to 13 Bit
Transfer rate	0.1 ... 2 MBit/s
Cycle time	< 600 µs
Standard conformity	RS 422
<b>Input 1</b>	
Input type	Selection of counting direction (cw/ccw)
Signal voltage	
High	4.5 V ... U <sub>B</sub> (cw descending)
Low	0 ... 2 V or unconnected (cw ascending)
Input current	< 6 mA
Switch-on delay	< 1.1 s
<b>Input 2</b>	
Input type	zero-set (PRESET 1) with falling edge
Signal voltage	
High	4.5 V ... U <sub>B</sub>
Low	0 ... 2 V
Input current	< 6 mA
Signal duration	min. 1.1 s
<b>Connection</b>	
Connector	M12 connector, 8-pin
Cable	Ø6 mm, 4 x 2 x 0.14 mm <sup>2</sup> , 1 m
<b>Standard conformity</b>	


Release date: 2022-04-21 Date of issue: 2022-12-12 Filename: t42540\_eng.pdf

Refer to "General Notes Relating to Pepperl+Fuchs Product Information".

**Technical Data**

Degree of protection	acc. DIN EN 60529
Connection side	cable models: IP54 connector models: IP65
Shaft side	IP65
Climatic testing	DIN EN 60068-2-3, no moisture condensation
Emitted interference	EN 61000-6-4:2007
Noise immunity	EN 61000-6-2:2005
Shock resistance	DIN EN 60068-2-27, 100 g, 6 ms
Vibration resistance	DIN EN 60068-2-6, 10 g, 10 ... 1000 Hz
<b>Ambient conditions</b>	
Operating temperature	cable, flexing: -5 ... 70 °C (-23 ... 158 °F), cable, fixed: -30 ... 70 °C (-22 ... 158 °F) connector models: -30 ... 85 °C (-22 ... 185 °F)
Storage temperature	cable models: -30 ... 70 °C (-22 ... 158 °F) connector models: -30 ... 85 °C (-22 ... 185 °F)
Relative humidity	98 % , no moisture condensation
<b>Mechanical specifications</b>	
Material	
Housing	nickel-plated steel
Flange	aluminum
Shaft	Stainless steel
Mass	approx. 150 g , with cable
Rotational speed	max. 12000 min <sup>-1</sup>
Moment of inertia	30 gcm <sup>2</sup>
Starting torque	< 3 Ncm
Shaft load	
Axial	40 N
Radial	110 N

**Accessories**

	<b>V19-G-ABG-PG9</b>	Female connector M12 straight A-coded 8-pin, for cable diameter 5 - 8 mm, shielded, field-attachable
---	----------------------	--

Release date: 2022-04-21 Date of issue: 2022-12-12 Filename: t42540\_eng.pdf

## Function

This singleturn absolute encoder transmits a position value corresponding to the shaft setting via the SSI interface (Synchronous Serial Interface).

The ASS36M series are encoders with internal magnetic sampling.

The control module sends a start sequence to the absolute encoder to obtain the position data. The rotary encoder then sends the position data synchronous to the cycles of the control module. It is possible to select the counting direction with the function input.

## Electrical connection

Signal	Wire end	Connector
GND (encoder)	White	1
U <sub>b</sub> (encoder)	Brown	2
Clock (+)	Green	3
Clock (-)	Yellow	4
Data (+)	Grey	5
Data (-)	Pink	6
Preset	Black or Blue	7
Counting direction	Red	8
Shielding	Shielding	Housing
Pinout	-	

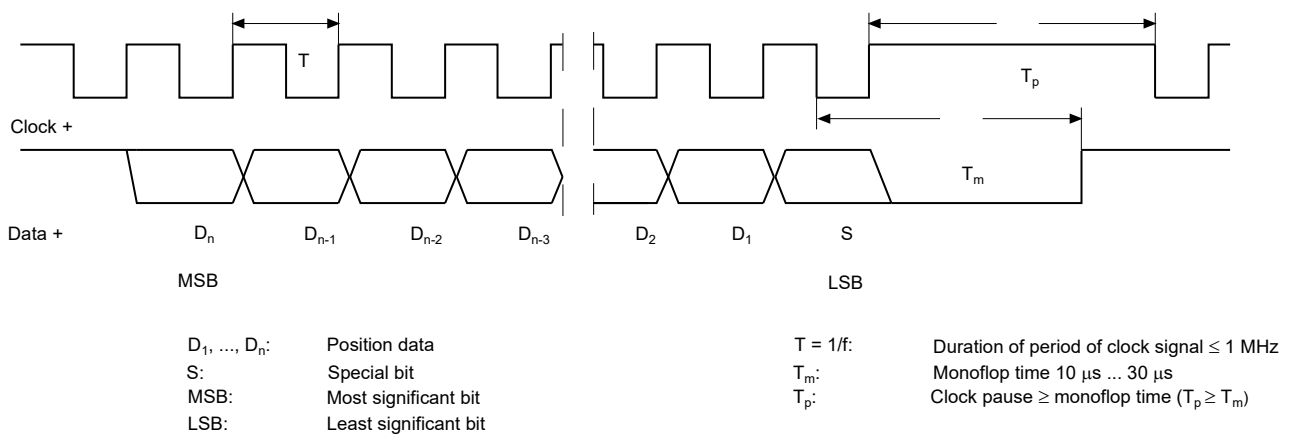
## Interface

### Description

The Synchronous Serial Interface was specially developed for transferring the output data of an absolute encoder to a control device. The control module sends a clock bundle and the absolute encoder responds with the position value.

Thus only 4 lines are required for the clock and data, no matter what the resolution of the rotary encoder is. The RS 422 interface is optically isolated from the power supply.

### SSI signal course Standard



### SSI output format Standard

- At idle status signal lines "Data +" and "Clock +" are at high level (5 V).
- The first time the clock signal switches from high to low, the data transfer in which the current information (position data ( $D_n$ ) and special bit (S)) is stored in the encoder is introduced.
- The highest order bit (MSB) is applied to the serial data output of the encoder with the first rising pulse edge.
- The next successive lower order bit is transferred with each following rising pulse edge.
- After the lowest order bit (LSB) has been transferred the data line switches to low until the monoflop time  $T_m$  has expired.
- No subsequent data transfer can be started until the data line switches to high again or the time for the clock pause  $T_p$  has expired.
- After the clock sequence is complete, the monoflop time  $T_m$  is triggered with the last falling pulse edge.
- The monoflop time  $T_m$  determines the lowest transmission frequency.

### SSI output format ring slide operation (multiple transmission)

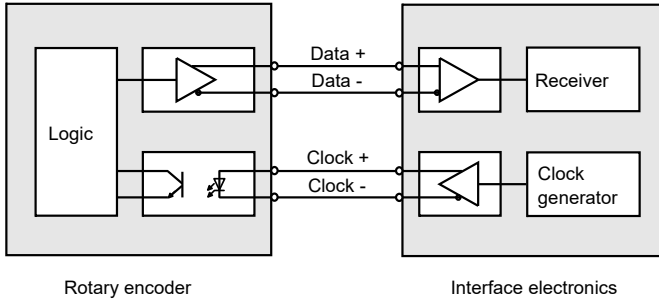
Refer to "General Notes Relating to Pepperl+Fuchs Product Information".

- In ring slide operation, multiple transmission of the same data word over the SSI interface makes it possible to offer the possibility of detecting transmission errors.
- In multiple transmission, 25 bits are transferred per data word in standard format.
- If the clock change is not interrupted after the last falling pulse edge, ring slide operation automatically becomes active. This means that the information that was stored at the time of the first clock change is generated again.
- After the first transmission, the 26<sup>th</sup> pulse controls data repetition. If the 26<sup>th</sup> pulse follows after an amount of time greater than the monoflop time  $T_m$ , a new current data word will be transmitted with the following pulses.



If the pulse line is exchanged, the data word is generated offset.  
Ring slide operation is possible up to max. 13 bits.

**Block diagram**



**Line length**

Line length in m	Baudrate in kHz
< 50	< 400
< 100	< 300
< 200	< 200
< 400	< 100

**Order code**

**A S S 3 6 M - F 4 A**      **0 N - 0 0**

**Number of bits singleturn**  
12 4096 (standard)  
13 8192 (max.)

**Temperature**  
N Normal

**Output code**  
B Binary  
G Gray

**Option**  
0 cw/ccw and preset

**Exit position**  
A Axial  
R Radial (only cable version)

**Connection type**  
K1 Cable Ø6 mm, 4 x 2 x 0.14 mm<sup>2</sup>, 1 m  
BE Connector, M12 x 1, 8 pin

**Shaft dimension/flange version**  
F4A Hollow shaft Ø6

**Sampling principle**  
M magnetic

**Principle of operation**  
S Singleturn

**Shaft version**  
S Recessed hollow shaft

**Data format**  
A SSI (Synchronous Serial Interface)

**Installation**

**Anti-interference measures**

Release date: 2022-04-21 Date of issue: 2022-12-12 Filename: t42540\_eng.pdf

Refer to "General Notes Relating to Pepperl+Fuchs Product Information".

The use of highly sophisticated microelectronics requires a consistently implemented anti-interference and wiring concept. This becomes all the more important the more compact the constructions are and the higher the demands are on the performance of modern machines.

The following installation instructions and proposals apply for "normal industrial environments". There is no ideal solution for all interfering environments.

When the following measures are applied, the encoder should be in perfect working order:

- Termination of the serial line with a 120 Ω resistor (between Receive/Transmit and Receive/Transmit) at the beginning and end of the serial line (e. g. the control and the last encoder).
- The wiring of the encoder should be laid at a large distance to energy lines which could cause interferences.
- Cable cross-section of the screen at least 4 mm<sup>2</sup>.
- Cable cross-section at least 0,14 mm<sup>2</sup>.
- The wiring of the screen and 0 V should be arranged radially, if and when possible.
- Do not kink or jam the cables.
- Adhere to the minimum bending radius as given in the data sheet and avoid tensile as well as shearing load.

**Operating instructions**

Every encoder manufactured by Pepperl+Fuchs leaves the factory in a perfect condition. In order to ensure this quality as well as a faultless operation, the following specifications have to be taken into consideration:

- Avoid any impact on the housing and in particular on the encoder shaft as well as the axial and radial overload of the encoder shaft.
- The accuracy and service life of the encoder is guaranteed only, if a suitable coupling is used.
- The operating voltage for the encoder and the follow-up device (e. g. control) has to be switched on and off simultaneously.
- Any wiring work has to be carried out with the system in a dead condition.
- The maximum operating voltages must not be exceeded. The devices have to be operated at extra-low safety voltage.

**Notes on connecting the electric screening**

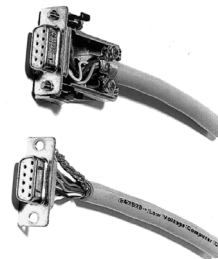
The immunity to interference of a plant depends on the correct screening. In this field installation faults occur frequently. Often the screen is applied to one side only, and is then soldered to the earthing terminal with a wire, which is a valid procedure in LF engineering. However, in case of EMC the rules of HF engineering apply.

One basic goal in HF engineering is to pass the HF energy to earth at an impedance as low as possible as otherwise energy would discharge into the cable. A low impedance is achieved by a large-surface connection to metal surfaces.

The following instructions have to be observed:

- Apply the screen on both sides to a "common earth" in a large surface, if there is no risk of equipotential currents.
- The screen has to be passed behind the insulation and has to be clamped on a large surface below the tension relief.
- In case of cable connections to screw-type terminals, the tension relief has to be connected to an earthed surface.
- If plugs are used, metallised plugs only should be fitted (such as sub D plugs with metallised housing). Please observe the direct connection of the tension relief to the housing.

Advantage:	metallised connector,
shield	clamped with the strain
relief	clamp
Disadvantage:	soldering shield on



**Safety instructions**

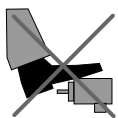
Please observe the national safety and accident prevention regulations as well as the subsequent safety instructions in these operating instructions when working on encoders.

If failures cannot be remedied, the device has to be shut down and has to be secured against accidental operation.

Repairs may be carried out only by the manufacturer. Entry into and modifications of the device are not permissible.

Tighten the clamping ring only, if a shaft has been fitted in the area of the clamping ring (hollow shaft encoders).

Tighten all screws and plug connectors prior to operating the encoder.

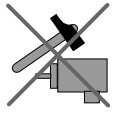


Do not stand on the encoder!

Release date: 2022-04-21 Date of issue: 2022-12-12 Filename: t42540\_eng.pdf



Do not remachine the drive shaft!



Avoid impact!



Do not remachine the housing!